

The Economic Implications of Housing Supply

Edward Glaeser and Joseph Gyourko

For most of US history, local economic booms were matched by local building booms. Into the 1960s, building was lightly regulated almost everywhere. Much housing was built in all high demand areas, including coastal California and New York City. However, between the 1960s and the 1990s, it became far more difficult to build in some areas with strong economic growth, especially those along the coasts. For example, there were 13,000 new housing units permitted in Manhattan in the single year of 1960 alone, which is nearly two-thirds of the 21,000 new units permitted throughout the decade of the 1990s (Glaeser, Gyourko, and Saks 2005). Higher economic productivity in the San Francisco Bay area, with its extensive restrictions on land use and building, now leads primarily to higher housing prices, rather than more homes and more workers (Ganong and Shoag 2013).

In this essay, we review the basic economics of housing supply and the functioning of US housing markets to better understand the distribution of home prices, household wealth, and the spatial distribution of people across markets. We employ a cost-based approach to gauge whether a housing market is delivering appropriately priced units. Specifically, we investigate whether market prices (roughly) equal the costs of producing the housing unit. If so, the market is well-functioning in the

■ *Edward Glaeser is the Fred and Eleanor Glimp Professor of Economics, Harvard University, Cambridge, Massachusetts. Joseph Gyourko is the Martin Bucksbaum Professor of Real Estate, Finance and Business Economics and Public Policy, the Wharton School, University of Pennsylvania, Philadelphia, Pennsylvania. Their email addresses are eglaeser@harvard.edu and gyourko@wharton.upenn.edu.*

† For supplementary materials such as appendices, datasets, and author disclosure statements, see the article page at

<https://doi.org/10.1257/jep.32.1.3>

doi=10.1257/jep.32.1.3

sense that it efficiently delivers housing units at their production cost. Of course, poorer households still may have very high housing cost burdens that society may wish to address via transfers. But if housing prices are above this cost in a given area, then the housing market is not functioning well—and housing is too expensive for all households in the market, not just for poorer ones.¹ The gap between price and production cost can be understood as a regulatory tax, which might be efficiently incorporating the negative externalities of new production, but typical estimates find that the implicit tax is far higher than most reasonable estimates of those externalities.

We begin by discussing how to estimate the minimum profitable cost of production for a house in a lightly regulated housing market, where such costs are primarily determined by geography and characteristics of local markets for labor and materials. We can then classify US housing markets into three different groups. In lightly regulated housing markets with growing population and economies, like Atlanta, the supply curve for housing is relatively flat. Thus, as demand for housing expands over time, the result is that competition in the home building industry holds the price of housing reasonably close to its minimum profitable production cost. In heavily regulated housing markets with growing economies, like the San Francisco Bay area, the supply curve for housing slopes up. As a result, additional demand for housing translates into prices that are substantially above the minimum profitable production cost, with rising land values driving up total costs. Finally, in a housing market like Detroit where the demand for housing declined sharply over time, the supply curve for housing has a kink at the existing level of housing because housing is durable and does not diminish quickly when demand falls. As a result, a reduction in demand leads to lower prices for housing and minimal new construction (Glaeser and Gyourko 2005).

The ratio of price to minimum profitable construction cost is akin to Tobin's q , the standard ratio of market value to firm replacement cost. Regulatory construction constraints can explain why this variant of q may be higher than one in some housing markets, just as capital adjustment costs can explain why q is higher than one in classical investment models (Hayashi 1982).

We then discuss two main effects of developments in housing prices: on patterns of household wealth and on the incentives for relocation to high-wage, high-productivity areas. Binding supply-side restrictions shape the personal portfolios of millions of Americans, and much of the rise in the capital share can be

¹ Policymakers often discuss housing prices through the prism of affordability: for example, many federal programs deem that housing is inappropriately expensive or unaffordable if the monetary costs of occupying your home exceed 30 percent of one's gross income. The social merits of this cutoff as a rough rule of thumb aside, economically, it lacks clarity about the extent to which the issue of housing affordability for a given area is due to a higher prevalence of households near or below the poverty level, or due to housing prices that are at relatively very high levels. It also fails to consider an implication of the standard spatial equilibrium model used in urban economics, which is that equalizing utility levels across space implies that housing costs will be a higher share of earnings in higher-wage locations (Rosen 1979; Roback 1982).

attributed to rising rents on housing. However, only a small sliver of America is sitting on a large amount of housing wealth. We will argue that the rise in housing wealth is concentrated in the major coastal markets that have high prices relative to minimum production costs, and it is concentrated among the richest members of the older cohorts—that is, on those who already owned homes several decades ago, before binding constraints on new housing construction were imposed. In effect, the changes in housing wealth reflect a redistribution from buyers to a select group of sellers.

The restrictions on housing supply and corresponding high housing prices in certain areas are also a distortion that limits the movement of workers in areas with high productivity and high wages—and also high housing costs. Hsieh and Moretti (2017) have estimated that real GDP could be nearly 9 percent higher if there were plentiful new construction in just the three high productivity markets of New York, San Francisco, and San Jose, so that people could move to equalize wages. We will discuss the basis for such estimates and show that there can be a fairly wide range of outcomes depending upon model and parameter assumptions. However, our analysis indicates that a lower bound cost of restrictive residential land use regulation is at least 2 percent of national output. If these regulatory distortions are efficiently internalizing negative externalities, then the benefit of increased aggregate output would also need to be weighed against the costs of local disamenities.

In the conclusion, we turn to some policy implications. The available evidence suggests, but does not definitively prove, that the implicit tax on development created by housing regulations is higher in many areas than any reasonable negative externalities associated with new construction. Consequently, there would appear to be welfare gains from reducing these restrictions. But in a democratic system where the rules for building and land use are largely determined by existing homeowners, development projects face a considerable disadvantage, especially since many of the potential beneficiaries of a new project do not have a place to live in the jurisdiction when possibilities for reducing regulation and expanding the supply of housing are debated.

Construction Costs and Regulations in Housing Markets

Variation across Physical Geographies in the Cost of Supplying a Home

There is no reason to expect that the production costs of housing should be the same across markets, even if those places have similar levels of regulation. Geography will make housing more expensive to build in some areas than others. Bedrock makes it easier to build up (Rosenthal and Strange 2008). Steep ground makes it much more challenging to build (Saiz 2010). Bodies of water can limit land supply.

The flat cities of the American Midwest are close to the perfect physical environment for building, as is much of the Sunbelt region. Conversely, America's coastal cities are considerably more difficult geographical environments for builders. California cities often have significant changes in elevation within a single metropolitan

area. Both East Coast and West Coast cities are limited in that they can only expand inland. All of America's oldest cities were built on major waterways because of the advantages of access to water-borne transportation. Consequently, the central business districts of markets such as Boston, New York, San Francisco, and even Chicago are close to the waterfront. Developers in those places only have a semi-circle of land to develop. The island of Manhattan poses particularly unique challenges.

When supply of housing is relatively lightly regulated, as it is throughout much of the American Sunbelt and the interior of the country, construction seems to be close to a constant-returns-to-scale technology. This relationship reflects the relative abundance of building materials such as wood, and less-skilled construction workers.² Of course, construction costs do vary according to the physical geography of local building conditions, but Gyourko and Saiz (2006) examine the heterogeneity of construction costs (discussed in more detail below) and find that the variance of such costs is much smaller than the heterogeneity of housing prices. This implies that we can talk sensibly about a single production cost.

Variations in Regulations on Land Use and Building

The United States is relatively unique in that land use is under local control, which leads to wide variation in regulation across communities. Many other countries, including the United Kingdom and France, have national planning agencies and guidelines set by their central governments. The type of local land use regulation in the United States, ranging from building code requirements to strict limits on the number of units delivered, also differs across markets and can affect construction costs associated with putting up the structure, as well as the underlying price of land.

Modern land use regulation in the United States dates back at least to the 1910s, when the initial zoning laws were enacted to limit negative externalities from spillovers between different kinds of land users. While there are no consistent time series measures of the local residential land use regulatory environment, researchers generally agree that such regulation has proliferated across markets and become onerous in some places. The term NIMBYism ("not in my back yard") dates back to Frieden (1979). The literature on this topic is now voluminous and Gyourko and Molloy (2015) provide a recent review.

There is no doubt that binding density restrictions affect supply. For example, the median Boston suburb has a minimum lot size over one acre—and larger minimum lot sizes are common. Unsurprisingly, minimum lot size is strongly negatively correlated with new building across communities in greater Boston (Glaeser and Ward 2009).

Restrictions often go far beyond minimum acreage or maximum height restrictions. Examples include laws that prohibit multifamily dwellings, stop development

²Taller buildings also display their own constant returns to scale because the per-square-foot cost of building to seven stories is quite close to the per-square-foot cost of building 50 stories (RSMMeans 2015). That said, the cost of building up is much higher than the cost of building low-rise dwellings.

near wetlands (which are often loosely defined), and make it difficult to build across large swaths of historic neighborhoods. Since the 1972 *Friends of Mammoth* case, the California Environmental Quality Act (CEQA) has been interpreted to require an environmental impact review for “most proposals for physical development in California” (<http://resources.ca.gov/ceqa/more/faq.html#when>). Environmental impact reviews may not ultimately prevent a project, but they will add time delays that increase development costs. Moreover, the environmental impact reviews only investigate the project’s impact on the local environment and do not include the environmental benefits of building in California, where carbon emissions would be low due to the mild climate, rather than, say, Texas or Arizona where they would be higher (Glaeser and Kahn 2010).

The potential for a multiyear review process, which is not uncommon in many jurisdictions, is associated with higher project uncertainty, not just time delays. A project may be denied approval after many years of active planning. That risk also increases the expected costs to developers and deters new housing supply.

The plethora of restrictions on building makes it difficult to measure the overall strictness of the broader regulatory environment, but it is possible to describe the nature of different types of communities’ approaches to regulation. The Wharton Residential Land Use Regulation Index, based on surveys of local government officials, documents wide differences in the difficulty of obtaining building permits across metropolitan areas (Gyourko, Saiz, and Summers 2008). The typical regulatory environment in their sample of 2,611 communities across 293 metropolitan areas can be described as follows: 1) two entities are required to approve any project requiring a zoning change, so there are multiple opportunities for rejection; 2) minimum lot size restrictions are omnipresent; 3) “development exaction fee programs” also are now omnipresent; and 4) the typical community exhibits about a six-month lag between submission of a permit request for a standard project and a decision on whether to approve it.

The one-third most highly regulated communities in the Gyourko, Saiz, and Summers (2008) sample also share some additional traits. Local and state pressure groups are much more likely to be involved in the regulatory process in these communities. More than half the highly regulated places have at least one neighborhood with a one-acre (or more) minimum lot size rule; in contrast, only 5 percent of the one-third most lightly regulated communities had any neighborhood with a one-acre minimum rule. Open space requirements, not just development exactions, are now common in highly regulated places. Finally, the most highly regulated places have project approval lags that average ten months in length, which is three times longer than in the least regulated one-third of communities. In another study, Saiz (2010) documents how both regulations and geography limit building and increase prices across space.

A variety of models of local land use control embed the idea that not all local residents will share the same goals, so that the regulatory environment will be shaped by the incentives and influence of different actors in the political process. For example, Fischel (2001) emphasizes the role of existing homeowners, who have

a strong incentive to protect what often is their most important asset. One obvious way to protect asset value is to restrict new supply. Theoretical analysis is much more challenging in a multicommodity setting that permits Tiebout-style sorting and strategic interactions (for discussion, see Gyourko and Molloy 2015). In principle, regulation can be an efficient means of forcing developers to internalize negative externalities from construction. Moreover, the spatial heterogeneity in those regulations may reflect different external costs from construction, perhaps because of different local preferences.

The general conclusion of existing research is that local land use regulation reduces the elasticity of housing supply, and that this results in a smaller stock of housing, higher house prices, greater volatility of house prices, and less volatility of new construction. Most results are consistent with these implications, and we report additional evidence below. However, it has been a challenge in this literature to find convincing instruments or some form of experimental variation. Because empirical work in this area is cross sectional in nature, it is subject to standard potential biases associated with omitted variables and reverse causality.³

What Does It Actually Cost to Supply Homes to the Market?

There are three components to the cost of delivering a unit of housing to the market: 1) the land (L) on which the housing unit sits; 2) construction costs (CC) associated with putting up structure itself; and 3) a rate of entrepreneurial profit (EP) needed to compensate the home builder. Thus, we define the “minimum profitable production cost” (MPPC) of a unit of housing as follows:

$$\text{MPPC} = (\text{L} + \text{CC}) \times \text{EP}.$$

Vacant land sales are rarely observed in the United States, so to estimate the value of a price of land, we use an industry rule of thumb based on an *ad hoc* survey of home builders that land values are no more than 20 percent of the sum of physical construction costs plus land in a relatively free market with few restrictions on building. We have used this metric in earlier research (Glaeser and Gyourko 2003, 2008), and it continues to be relevant and consistent with the data discussed below.

The gross profit margin on the builder’s land and construction costs for a portfolio of homebuilders range from 9–11 percent per annum across the cycle. This implies gross margins of about 17 percent given that cost of operations are roughly 35–40 percent of gross margins for such companies. Hence, EP = 1.17 in our calculations below.

³To understand the problem of finding experimental variation in this literature, consider the variation in difficulty of building across space generated by geographic variables of the type analyzed by Saiz (2010). In this setting, a location that is close to water increases housing demand, but also creates a more challenging geographical environment. More generally, home-building will occur in more challenging and costly locations only if those locations have something else going for them. Consequently, geography provides meaningful variation in the difficulty of building, but is not a valid instrument for housing supply in most situations.

Physical construction costs are more readily observable from the home building industry. We use RS Means Company (RSMMeans) data on physical construction costs as the foundation of our estimates of minimum profitable production cost. This firm provides and sells estimates of the cost of providing units of different qualities across more than 100 American housing markets. Their data have been used by us (and others) in previous research (for examples, see Glaeser and Gyourko 2003, 2005; Glaeser, Gyourko, and Saks 2005; Gyourko and Saiz 2006).

The RSMMeans cost estimates cover material, labor, and equipment (but not land) for four different qualities of single family homes—economy, average, custom, and luxury. Means reports costs per square foot and provides estimates for homes ranging in size from 600 ft² to 3,200 ft² of living area. Breakdowns are available by the number of stories in the house, and certain other characteristics (such as the presence of a basement). We focus on costs associated with a smaller, modest-quality, one-story home of economy quality described in RSMMeans publication, *Residential Cost Data 2015*.⁴ We choose this home because we believe it reflects the quality of the typical home (which is not new or very large) in most, if not all, markets. We have experimented with using this data with regard to homes of other quality characteristics and discuss possible biases below.

The first important fact is that structure costs are modest for an economy-quality home. The interquartile range runs from \$72/ft² to \$86/ft², and the distribution is not fat-tailed. The 5th and 95th percentile values are \$68/ft² and \$95/ft², respectively. Thus, in cheaper markets, physical construction costs associated with putting up a typical home with 2,000 ft² of living space are about \$140,000 (approximately \$70 per square foot); in the most expensive markets, the costs are about \$180,000 (approximately \$90 per square foot).

A second noteworthy fact is that real construction costs have not risen much over time. Measured in constant 2010 dollars, the cost was \$83 per square foot in 1980, had declined slightly to the mid-\$60s per square foot by the late 1990s and early 2000s, and then rose back to \$85 per square foot by 2015. This finding is consistent with much previous research and implies that rising real house prices cannot be explained by higher physical construction costs (for example, Davis and Heathcote 2007; Davis and Palumbo 2008; Gyourko and Molloy 2015).

These relatively constant physical production costs help us to understand the often-noted decline in total factor productivity in the construction sector (for example, Barbosa et al. 2017). This decline does not seem to result from any change in building technology, but rather an increase in other costs associated with delivering housing, such as dealing with regulation.

⁴Specifically, this is a one-story single family home, one full bathroom, one kitchen, asphalt roof shingles, hot air heat, gypsum wallboard interior finishes, mass produced from stock plans. The RSMMeans Company presumes that a given quality home is constructed in a common way across markets. It divides the home into a number of different tasks that require certain services, materials, or labor. RSMMeans then surveys local suppliers and builders to determine the local price of those inputs. One-off construction of custom homes would be much more costly. See RSMMeans Company (2015) and section 2 in Gyourko and Saiz (2006) for more on the underlying methodology.

Given the assumptions outlined above for costs of land and profits, minimum profitable production costs that take land and profit into account are nearly 50 percent higher than the RSMeans physical construction cost numbers. This suggests that an efficient housing market should be able to supply economy-quality single-family housing with 2,000 ft² of living space for around \$200,000 in low construction cost markets and for little more than \$265,000 in the highest construction cost markets. The key factors that account for the cross-sectional variation in structure production costs in this data are the extent of unionization in the construction industry, the level of local wages in general, and difficult topography (Gyourko and Saiz 2006). For perspective, what RSMeans calls the “average” quality home costs about 25 percent more than the economy home, and the highest quality “luxury” home of the same size costs almost twice as much to construct as the economy home.

Comparing Minimum Profitable Production Cost and Actual Housing Prices

We can compute the ratios of house prices to the minimum profitable production cost using different data sources on home values. Most of our results below use self-reported house prices from the microdata in the biannual American Housing Survey (AHS), which runs from 1985 to 2013. It reports data on individual housing units and their occupants in 98 core-based statistical areas (CBSAs), which refers to a metropolitan area of one or more counties anchored by an urban center of at least 10,000 people, tied together by commuting patterns. These markets (which are listed in an online Appendix to this article at <http://e-jep.org>) contain approximately 75 percent of the urbanized population in the United States according to 2010 Census data and include virtually any market of significant size.⁵

Some strengths of the American Housing Survey data are that they contain microdata, clearly identify single-family detached units, and report the square footage of living area. The latter is useful as it allows us to match units of different sizes with the appropriate construction cost in the RSMeans data. (Smaller units typically have higher costs per square foot.) We do this for homes of 600, 800, 1,000, 1,200, 1,400, 1,600, 1,800, 2,000, 2,400, 2,800, 3,200, 3,600 and 4,000+ square feet of living area. Specifically, if a house is reported to be less than or equal to 700 square feet of living area, this is matched to RSMeans costs per square foot for a 600 square-foot, economy-quality home.

Each single family home that includes data on living area is matched with cost data from RSMeans and then grouped into one of four bins, based on the ratio of housing prices to minimum profitable production cost (P/MPPC): 1) A ratio of 0.75 or less, which implies that market value of the house is at least 25 percent below

⁵We cannot calculate a truly national ratio of housing price-to-minimum profitable production cost. Construction costs are not reported by RSMeans for each market in the country, and no such data are available for rural areas either. Moreover, the American Community Survey does not report anything on housing unit size, which means that added assumptions need to be made if using its data to compare housing prices and costs. We did experiment with the median-priced-unit from the 2014 American Community Survey in computing price-to-cost ratios like those we are about to discuss. Our findings are very similar in quality and quantity to those we will report using the American Housing Survey.

our estimate of reproduction costs; 2) a ratio between 0.75 and 1.25, which we interpret to be the range within which prices are not materially different from minimum profitable production costs; 3) a ratio between 1.25 and 2; and 4) a ratio greater than 2, which implies that prices are more than double our estimate of production costs. We chose these four relatively wide bins because they are likely to be reasonably robust to the measurement error involved in the construction of our ratios.

These ratios are essentially the value of Tobin's q for housing. Just as in standard investment theory, a value of q below one implies that the capital would not be replaced if it were destroyed. Values of q above one must reflect some barrier to investment, which we believe is more likely to be regulation in the housing market rather than standard adjustment costs (Hayashi 1982). Values of q above one can also be a sign of market overvaluation, as in Las Vegas in 2005, but only in cases where land is abundant and regulations are few.

Table 1 reports our baseline results, which include data from 1985 to 2013. As of 2013, slightly less than three-quarters of all observations (73.6 percent) are priced near or below minimum profitable production costs (we see this by adding together numbers from the first two columns), with more than half of them being valued more than 25 percent below. This leaves just over one-fourth (26.4 percent) living in expensive housing, with 10 percent of the underlying sample living in homes estimated to be more than double minimum profitable production costs. In a large swath of urban America—and especially if one focuses on the local housing markets in the bottom four-fifths of prices—the housing market is supplying units at quite reasonable prices given all-in production costs.

Also, Table 1 shows that the housing cycle matters. For example, at the height of the last housing boom, the 2005 data indicate that more than one-half of all observations were at least 25 percent more expensive than minimum profitable production costs.⁶

Given the inevitable measurement error arising from unobserved quality differences across housing units reported in the microdata, another way to examine the spatial distribution of housing prices is at the metropolitan-area level. We look at the ratio of the median housing price to the minimum profitable production cost in every housing market for which we have at least 25 individual observations.⁷ Table 2

⁶We also experimented with different housing quality assumptions in computing minimum profitable production cost. Using the lowest quality that meets local building codes for the cost of supplying a home will result in misclassifying some observations as expensive (that is, with a ratio over 125 percent), especially those living in elite suburbs. If we use the costs associated with what RSMMeans terms “average” quality (one above economy quality), the share of observations classified as expensive falls from 26 to 18 percent. Using the highest possible construction quality—the “luxury” homes in RSMMeans terminology—is required to dramatically lower the estimate of expensive homes. In that case, the share of observations valued at more than 125 percent of minimum profitable production cost falls to just over 6 percent. Thus, our conclusion that the vast majority of homes are priced near or below their full social costs of replication is robust to virtually any assumption we could make.

⁷This use of the median only for markets with 25 or more observations results in an unbalanced panel of markets, but the findings are not materially different if we restrict the data to the common set of metropolitan areas for which we have at least 25 observations each survey year dating back to 1985.

Table 1

**House Price to Minimum Profitable Production Cost Ratio (P/MPPC):
Using All the Micro Data**
(percent of observations that fall into each category)

Year	$P/MPPC \leq 0.75$	$0.75 < P/MPPC \leq 1.25$	$1.25 < P/MPPC \leq 2$	$P/MPPC > 2$
1985	38.0%	40.5%	17.9%	3.6%
1987	33.4%	38.3%	21.7%	6.6%
1989	31.8%	34.6%	20.3%	13.3%
1991	31.1%	35.3%	22.5%	11.1%
1993	31.8%	36.1%	23.6%	8.5%
1995	27.4%	37.7%	26.5%	8.4%
1997	31.5%	40.0%	23.0%	5.5%
1999	22.0%	40.1%	26.2%	11.8%
2001	19.4%	38.2%	25.2%	17.1%
2003	16.2%	32.1%	25.9%	25.9%
2005	18.0%	28.7%	25.3%	28.0%
2007	19.9%	28.1%	24.0%	28.0%
2009	31.4%	33.9%	21.6%	13.1%
2011	37.4%	35.4%	16.0%	11.2%
2013	40.3%	33.3%	16.2%	10.2%

Source: The calculations are based on self-reported house prices from the micro data in the biannual American Housing Survey (AHS), which runs from 1985 to 2013 and reports data on individual housing units and their occupants in 98 core-based statistical areas (CBSAs), containing approximately 75 percent of the urbanized population in the United States. Each single family home from the AHS that includes data on living area is matched with data on construction costs from RSMMeans.

Notes: The table shows the percentage of single family homes each year that fall into one of four bins based on the ratio of housing prices to minimum profitable production cost (P/MPPC): 1) A ratio of 0.75 or less, which implies that market value of the house is at least 25 percent below our estimate of reproduction costs; 2) a ratio between 0.75 and 1.25, the range within which prices are not materially different from minimum profitable production costs; 3) a ratio between 1.25 and 2; and 4) a ratio greater than 2, which implies that prices are more than double our estimate of production costs.

shows the percentage of metropolitan areas each year that fall into one of four bins based on the ratio of housing prices to minimum profitable production cost (P/MPPC).

In 1985, over 90 percent of our metropolitan areas had median price-to-cost ratios less than or near 1. Only five (6.4 percent) had medians above 1.25 (and there were none where price was more than double production cost). The percentage of observations that year in the two most-overpriced categories on Table 2 is only one-third of the 21.5 percent reported for these same two categories in Table 1, which uses all the microdata. But we do not find this surprising given the measurement error issue associated with unobserved unit quality, especially for homes located in the most desired suburbs. As of the middle of the 1980s, in only a handful of markets concentrated in California and Hawaii, and none on the East Coast, was the typical home expensive relative to minimum profitable production cost. Based on earlier Census data, we presume that this distribution largely characterized housing markets before that point as well (Gyourko, Mayer, and Sinai 2013).

Table 2

**House Price-to-Minimum Profitable Production Cost Ratio (P/MPPC):
Median Values across Core-Based Statistical Areas (CBSAs)**
(percent of observations that fall into each category)

Year	Number of CBSAs	$P/MPPC \leq 0.75$	$0.75 < P/MPPC \leq 1.25$	$1.25 < P/MPPC \leq 2$	$P/MPPC > 2$
1985	78	37.2%	56.4%	6.4%	0.0%
1987	73	28.8%	57.5%	13.7%	0.0%
1989	78	34.6%	50.0%	10.3%	5.1%
1991	71	23.9%	57.7%	14.1%	4.2%
1993	79	25.3%	62.0%	11.4%	1.3%
1995	72	19.4%	68.1%	9.7%	2.8%
1997	70	15.7%	71.4%	12.9%	0.0%
1999	71	8.5%	74.6%	14.1%	2.8%
2001	71	7.0%	69.0%	16.9%	7.0%
2003	71	5.6%	60.6%	23.9%	9.9%
2005	70	11.4%	44.3%	27.1%	17.1%
2007	66	12.1%	39.4%	30.3%	18.2%
2009	65	24.6%	50.8%	20.0%	4.6%
2011	67	29.8%	50.7%	14.9%	4.5%
2013	69	33.3%	50.7%	10.1%	5.8%

Source: The calculations are based on self-reported house prices from the microdata in the biannual American Housing Survey (AHS), which runs from 1985 to 2013 and reports data on individual housing units and their occupants in 98 core-based statistical areas (CBSAs), containing approximately 75 percent of the urbanized population in the United States. Each single family home from the AHS that includes data on living area is matched with data on construction costs from R.S. Means Company.

Notes: We look at the ratio of the median housing price to the minimum profitable production cost in every housing market (core-based statistical area) for which we have at least 25 individual observations. The table shows the percentage of metropolitan areas each year that fall into one of four bins based on the ratio of housing prices to minimum profitable production cost (P/MPPC): 1) A ratio of 0.75 or less, which implies that market value of the house is at least 25 percent below our estimate of reproduction costs; 2) a ratio between 0.75 and 1.25, the range within which prices are not materially different from minimum profitable production costs; 3) a ratio between 1.25 and 2; and 4) a ratio greater than 2, which implies that prices are more than double our estimate of production costs.

During the late 1980s boom in housing prices, median prices shifted up relative to construction costs. By 1991, the share of metropolitan areas with median value-to-cost ratios below 0.75 had fallen to 24 percent, but another 58 percent had values reasonably close to 1. The share of metropolitan areas with median price-to-cost ratios greater than 1.25 more than doubled to just over 14 percent, with the Honolulu, Los Angeles, and San Francisco markets having prices more than double minimum profitable production costs.

The mid-1990s seems to have been a time of compression of metropolitan area prices, just as it was the only period in recent decades in which income inequality also declined. But between 1997 and 2007, median price-to-cost ratios in the most expensive markets rose dramatically. At the height of the boom in 2007, just over 48 percent of our metropolitan areas had median ratios with prices more than 25 percent above estimated reproduction costs, with one-third of those areas having price-to-cost ratios that were greater than two.

The years following the global financial crisis saw a distribution of median price-to-cost ratios that looked much like the early 1990s. By 2013, only three markets had median price-to-cost ratios above 2—the same number as in 1991. Nearly 10 percent had ratios between 125 and 200 percent, which is only slightly lower than the analogous share in 1991. Median price-to-cost ratios were less than 0.75 in one-third of markets in 2013, which is higher than the 24 percent in 1991. This pattern implies that in a substantial fraction of urbanized America, it would not pay to rebuild the typical home if it fell down today. Nominal prices have gone up in these areas since the late 1980s, but nominal construction costs have risen as well.

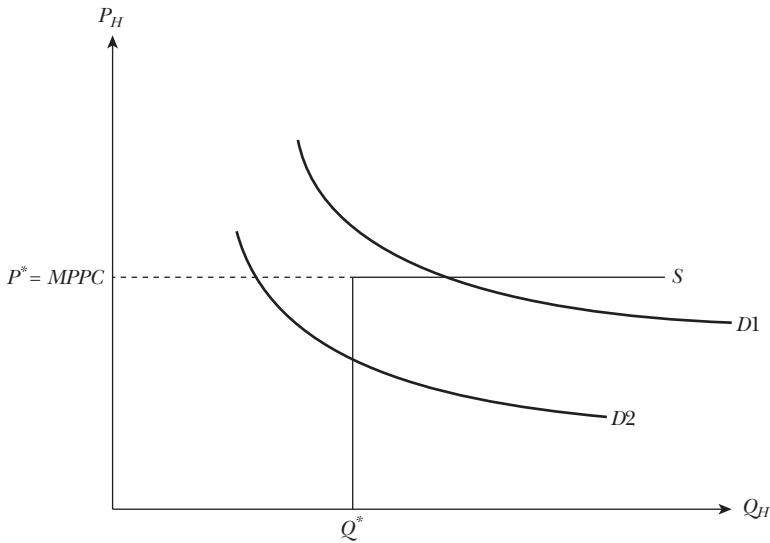
Perhaps the largest difference between 1985 and 2013 is that the share of metropolitan areas with median price-to-cost ratios above 1.25 has risen from 6.4 to 15.9 percent. There are now a modest number of markets in America (though more than in 1985) where the typical owner is living in a home that is priced substantially above minimum profitable production costs. These markets include some of the nation's most productive labor markets, so they are important for the nation's economic future.⁸

This gap between price and cost seems to reflect the influence of regulation, not the scarcity value arising from a purely physical or geographic limitation on the supply of land. For example, in Glaeser, Gyourko, and Saks (2005), we show that the cost of Manhattan apartments are far higher than marginal construction costs, and more apartments could readily be delivered by building up without using more land. This and other research we have done (Glaeser and Gyourko 2003) also finds that land is worth far more when it sits under a new home than when it extends the lot of an existing home, which is also most compatible with a view that the limitation is related to permits, not acreage per se.

It is possible that regulatory limits on construction are efficiently internalizing the negative externalities from construction, but the vast gap between price and construction cost in some coastal markets could only be justified by enormous construction externalities. Empirical investigations of the local costs and benefits of restricting building generally conclude that the negative externalities are not nearly large enough to justify the costs of regulation (Cheshire and Sheppard 2002; Glaeser, Gyourko, and Saks 2005; Turner, Haughwout, and van der Klaauw 2014). Glaeser and Ward (2009) also find that the impact of neighborhood-level density on housing values in greater Boston is far too small to justify the current restrictions on new construction.

⁸The three markets with ratios of median housing price to minimum profitable production cost above 2 are Los Angeles–Long Beach–Anaheim, CA; Oxnard–Thousand Oaks–Ventura, CA; and San Francisco–Oakland–Hayward, CA. Those with ratios between 1.25 and 2 are Baltimore–Columbia–Towson, MD; Boston–Cambridge–Newton, MA–NH; Denver–Aurora–Lakewood, CO; New York–Newark–Jersey City, NY–NJ–PA; San Diego–Carlsbad, CA; Seattle–Tacoma–Bellevue, WA; and Washington–Arlington–Alexandria; DC–VA–MD–WV.

Figure 1
Kinked Supply Schedule from Durable Housing



Note: “MPPC” means minimum profitable production costs.

A Closer Look at Three Types of Markets: Detroit, Atlanta, and San Francisco

The housing market in Detroit–Warren–Dearborn, Michigan, is emblematic of a place in which home prices have been well under minimum profitable production costs for long periods of time. This is one of the cases illustrated in Figure 1. The supply schedule of housing is always kinked, with the vertical component reflecting the size of the current stock. The height of the supply schedule at the kink is minimum profitable production costs. Even as the housing market in Detroit–Warren–Dearborn was growing in the past, prices were pinned down by minimum profitable production cost (Glaeser and Gyourko 2005), as shown by the intersection of supply and demand, D_1 , which is on the horizontal part of the supply schedule.

Following a negative demand shock for the market (in this case, fierce foreign competition for the domestic auto industry, which was concentrated in Detroit), demand dropped to D_2 and now intersects supply on its vertical component. Prices are below the full production cost of new housing, because this intersection reflects the depreciated price of older housing. Most Americans, not just those in declining markets, do not live in new units. More than seven million occupied housing units were built before 1919, constituting approximately 6.2 percent of the occupied housing stock. Over 30 percent of occupied units in 2014 were built before 1960 and so were more than 50 years old. As shown in Figure 2A, the ratio of house prices to minimum profitable production cost in Detroit was well below 1 for much of the 1980s and 1990s, and then rose towards 1 during the recent long boom, before falling back after the bust ensued. Unsurprisingly, annual building permits in Detroit are

not more than about 1 percent of the market's 2000 housing stock in any year since 1985—and were near zero from 2007–2011, according to American Housing Survey data.

The Atlanta market is a canonical example of a local housing market in which supply is highly elastic (beyond the kink) and demand is strong enough to always intersect the supply schedule beyond the kink, keeping prices at minimal profitable production cost. As Figure 2B shows, new supply is highly volatile. Permitting intensity was running at 3 percent of market size in 1985; fell half by 1991 as the local economy declined; more than doubled to nearly 4.5 percent of market size by 2005; plummeted to below 0.5 percent of market size in the throes of the financial crisis by 2009; and has only recently started to increase again. Amidst all this variation in new supply, the median owner's price-to-cost ratio never varies much from 1. This is consistent with a highly elastic supply side of the housing market, in which demand is intersecting supply beyond the kink on the horizontal part of the supply schedule in Figure 1.

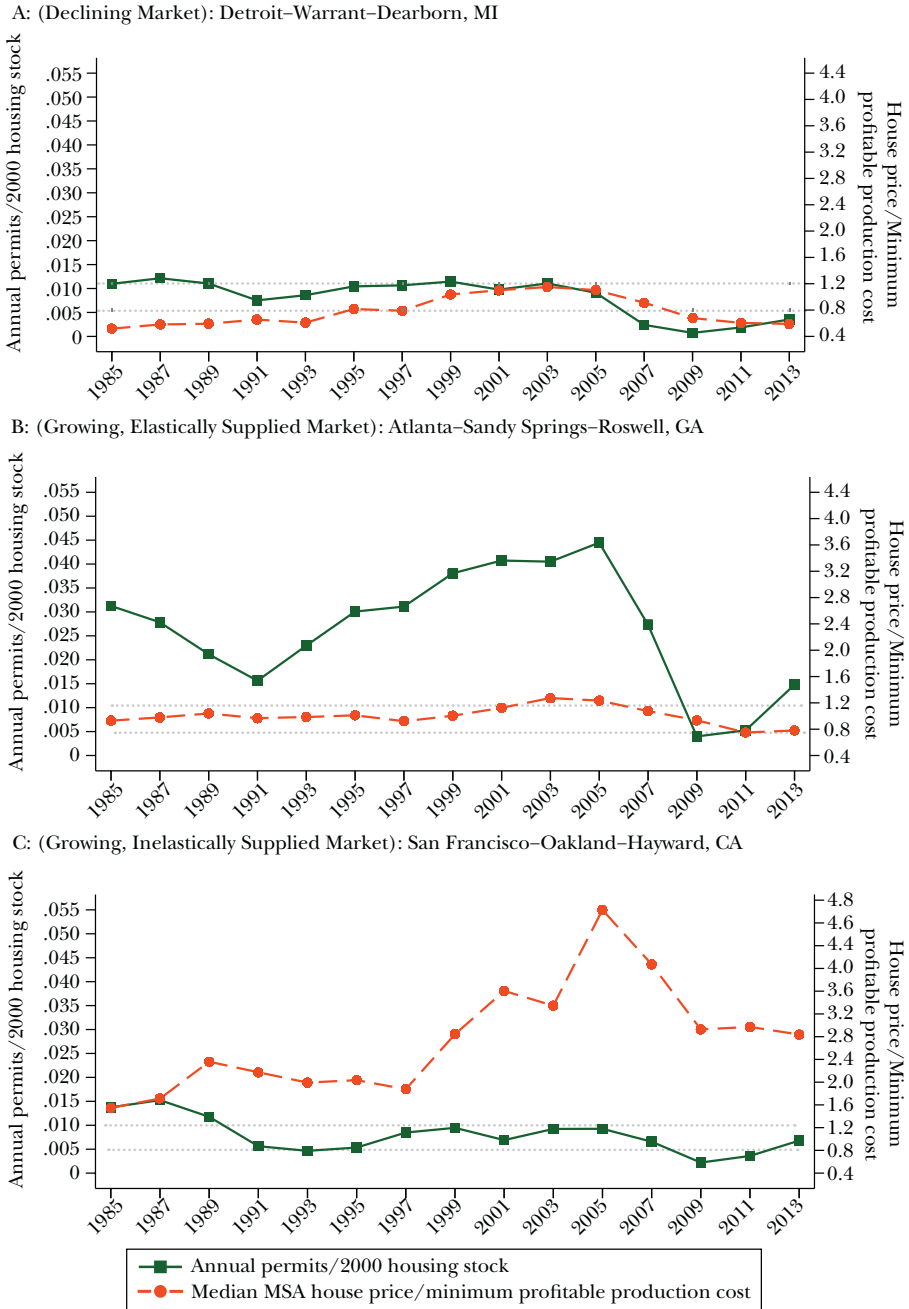
San Francisco represents the third type of housing market in which the price of housing is considerably above the minimum profitable production cost. In this situation, strict regulation of housing construction means developers in this type of market cannot bring on new supply even though it looks as if they could earn super-normal profits if they did. Unlike the graph in Figure 1, the supply schedule beyond the kink is upward sloping, and demand is strong enough to intersect the supply schedule well above where $P = MPPC$. Thus, shifts in the demand for housing affect price more than quantity. As Figure 2C shows, the median house price in this market has been well above the minimum profitable production cost for the past three decades and reached dramatic heights at the peak of the last housing boom in 2005. However, permitting activity did not increase at all over the eight-year span from 1997 to 2005, even though the median price-to-cost ratio increased from below 2 to over 5. Although the ratio has fallen sharply from that peak, it remained a very high 2.84 as of 2013. The link between prices (relative to production costs) and new supply has been broken in this type of market.

San Francisco is a relatively high physical construction cost market, but that is not what makes its homes cost so much. The median housing unit in this market contained 1900 square feet, and the physical construction costs for this unit based on RSMMeans data were \$192,938, so the per square foot cost of the (presumed modest quality) structure was just over \$100 per square foot, which is one of the most expensive construction cost markets in the United States. Our earlier assumption that land is 20 percent of the physical-cost-plus-land total provides an estimated land price of \$48,235. Stated differently, that is what we think the underlying land would cost in a relatively unregulated residential development market. Add the builder's 17 percent gross margin, and the minimum profitable production cost for this house is \$281,690. This compares with an actual price of the median house of \$800,000 (and thus a price-to-cost ratio of 2.84).

Clearly, San Francisco housing developers cannot actually earn super-normal profits on the margin. Instead, what makes San Francisco housing so expensive is

Figure 2

New Housing Supply and House Prices (Relative to Costs)



Source: House prices come from American Housing Survey micro data.

Note: Minimum Profitable Production Costs (MPPC) are for 1800 square feet, economy class, 20 percent land share, and 17 percent gross margin homes.

the bidding up of land values. Our formula suggests that the land underlying this particular modest-quality home cost about \$490,000—roughly 10 times the amount presumed for our underlying calculations of the minimum profitable production cost.

The time path of prices in the three cities is representative of a larger pattern: cities with inelastic housing supply generally experienced much more extreme price gyrations during the boom–bust cycles of the 1980s and 2000s. In Glaeser, Gyourko, and Saiz (2008), we report that in the 1980s boom, mean price growth was 29 percent for most inelastic metropolitan areas and 3.4 percent for the most elastic metropolitan areas. During the 1996–2006 boom, mean real price growth was 93.9 percent in the most inelastic cities and 28.2 percent in the most elastic cities. The remarkable element in the 1996 to 2006 period is that some relatively elastic cities, such as Phoenix and Las Vegas, still experienced extremely high price growth over a short time period, and equally sharp subsequent declines.

Additional Connections

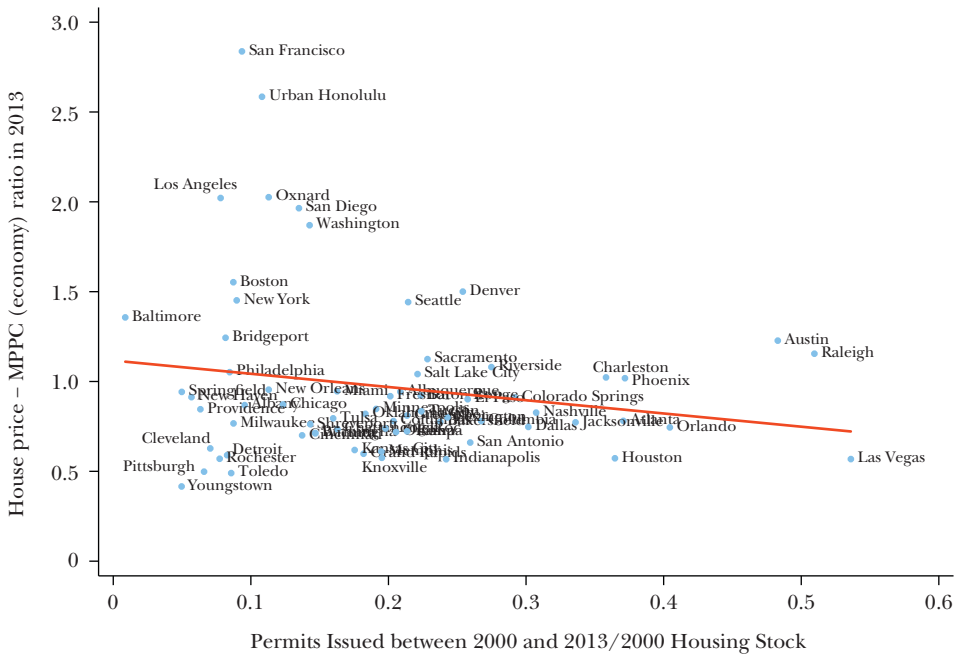
Overall, more expensive housing markets tend to be both more regulated and have more inelastic supply sides. The correlation of median house price in 2013 with the Wharton Residential Land Use Restrictiveness Index (which has a bigger value the more restrictive the regulatory environment) is about 0.5. This is very similar to the magnitude of the correlation with Saiz’s (2010) elasticity measure (although of the opposite sign because his measure declines in value when supply is more inelastic).

A broader look at our data also shows a clear connection between housing prices and new home construction activity. Figure 3 confirms that Atlanta, Detroit, and San Francisco are, indeed, representative of the three market types discussed. Price-to-MPPC ratios in 2013 are plotted against the magnitude of construction activity as reflected by the ratio of new units built between 2000 and 2013 to the housing stock in 2000. The modest negative slope that best fits that scatter plot of markets is driven by the following combination of facts: 1) among markets with high P/MPPC ratios of 1.5+, there was relatively little new home construction over this 13-year period (typically less than 15 percent in aggregate, or about 1 percent per annum on a compounded basis), and in addition, there is little variation in permitting intensity among this group of the most expensive housing markets; 2) among markets with low P/MPPC ratios of 0.7 or less, there also was very little new home construction, so that building intensity in the lowest-price housing markets (Detroit, Cleveland and Rochester) is not much less than in Boston or New York City—although the reason is that builders cannot earn a profit in the low-price markets; and 3) among the markets with P/MPPC ratios closer to one, there is a much wider range of building levels, depending upon the level of demand in each metropolitan area.

Our data also shows a marked increase in price dispersion across markets, with the right tail of inflation-adjusted housing prices much longer now than it was three decades earlier. This is consistent with earlier research (for example, Gyourko, Mayer, and Sinai 2013).

Figure 3

Price-to-Cost Ratios and Permitting Intensity, 2000–2013



Source: Housing stock data are from the 2000 decennial census. Housing permit data were collected from the Department of Housing and Urban Development’s State of the Cities Data System (SOCDS) at <http://www.huduser.gov/portal/datasets/socda/html>. Price-to-cost ratios were created using the data discussed above in Tables 1 and 2.
 Note: MPPC is Minimum Profitable Production Cost.

Finally, there is a strong correlation between homeowner income and the degree of regulation in a market. Variation in the Wharton regulatory index or Saiz’s (2010) elasticity can account for nearly 25 percent of the variation in the income of the owner of the median-priced home in 2014 based on American Community Survey data. Given the aforementioned positive correlation between house prices and the degree of regulatory constraint, it is not surprising to find higher-income people living in more expensive homes. Of course, no causal relation is implied from a simple bivariate correlation. However, this does link to one of the most important new implications of inelastic supply sides in coastal markets—the potential impact on the distribution of wealth and on the geographic distribution of where people of different income levels are more likely to end up living. We now turn to these issues.

The Impact of Supply Restrictions: Household Wealth

If housing restrictions have helped cause the secular rise in coastal housing prices, and the enormous volatility of prices during boom–bust cycles, then they may help explain the movement in household wealth in the United States (and elsewhere). Piketty (2014) estimates that the ratio of the US capital stock to GDP increased from 332 percent in 1970 to 410 percent in 2010, and that increases in the value of the housing stock accounts for 40 percent of this increase. Increases in housing capital account for 83 percent of the increase in the ratio of private capital-to-income between 1970 and 2010. As Rognlie (2015) has carefully documented, the net capital share increase in the post–World War II era due to housing was from 3 to 8 percent of domestic value added. La Cava (2016) argues that this increase in housing wealth in recent decades has largely been due to supply-constrained markets.

This growth in the stock of housing capital relative to GDP in recent decades is primarily about prices, not the physical supply of housing. Between 1973 and 2010, the average new home expanded from 1,660 square feet to 2,392 square feet, but this 44 percent increase is far less than the 100 percent increase in income over the same time period. Standard indices such as the S&P/Case–Shiller Index or the Federal Housing Finance Agency (FHFA) housing price index, which use repeat sales and other methods to control for changes in the quality of housing quality, still show impressive increases in prices in restricted markets, such as the 109 percent increase in real prices in greater San Francisco between 1991 and 2016. Owners of even modest properties in San Francisco who were fortunate enough to have bought prior to the rise of restrictive building regulations have seen an increase in wealth of several hundred thousand dollars. This increase in wealth is due to higher costs of land, not higher costs of physical construction, and in turn, we believe that the higher cost of land has been driven by binding land use restrictions.⁹

Yet housing wealth is different from other forms of wealth because rising prices both increase the financial value of an asset and the cost of living. An infinitively lived homeowner who has no intention of moving and is not credit-constrained would be no better off if her home doubled in value and no worse off if her home value declined. The asset value increase exactly offsets the rising cost of living (Sinai and Souleles 2005). This logic explains why home-rich New Yorkers or Parisians may not feel privileged: if they want to continue living in their homes, sky-high housing values do them little good.

Ultimately, the source of high housing costs determines its impact on well-being and personal finances. For example, if higher housing prices reflect higher wages, then San Francisco may have become less affordable, but residents who have owned property for a time are also richer. This logic leads Moretti (2013) to conclude that nominal wage inequality overstates true inequality, because those with high incomes need to pay more for access to their well-paid labor markets. Conversely,

⁹See footnote 27 in our working paper version (Glaeser and Gyourko 2017) for the calculations behind this conclusion.

Diamond (2016) argues that high housing prices in educated metropolitan areas reflect higher amenity values in those areas, which implies that real inequality is higher than earnings inequality. More generally, if higher housing prices reflect more amenities, then buyers are no worse off, but if they reflect a greater demand for the same amenities, then buyers' welfare has fallen.

In any event, the gains in housing wealth are not evenly distributed. When housing prices rise, those who already own housing are essentially hedged against a higher cost of housing (Sinai and Souleles 2005). Renters, conversely, experience the rising housing costs directly and become poorer in real terms.

Because homeowners tend to be older while renters are younger, the limited growth in housing supply has created an intergenerational transfer to currently older people who happened to have owned in the relatively small number of coastal markets that have seen land values increase substantially. On a per-owner basis, the value of these wealth gains can be considerable, but the number of markets is relatively small and many are not particularly populous. Only 11 of our Core Based Statistical Areas have a housing price-to-cost ratio above 1.25 in 2013. In total, they contained 58.8 million people and 22.9 million total housing units (according to American Community Survey data for 2014). More than half of this total for these markets consists of the 31 million people and 12 million housing units in the huge New York City and Los Angeles markets; in total, these areas contain only about 23 percent of total urban population. This relatively low share of the urban population should not be a surprise: after all, these are areas with strong constraints on building, and people cannot move to these cities without a place to live.

Table 3 presents data on net worth for six different pairs of age groups in 1983 and in 2013 from the Survey of Consumer Finances carried out by the Federal Reserve. The public use samples do not provide any geographical identifiers, but we focus here on facts about home equity. We report values for the 50th, 75th, 90th, 95th, and 99th percentiles of the distribution. Given the aggregate sample size, there are 30–40 observations per percentile. We report the average of those observations.

This table allows us to look at the same age cohort at two different times, three decades apart: for example, comparing housing wealth for 18–24 year-olds in 1983 and in 2013. The 18–24 age group has little housing wealth in 1983, and less at each percentile level in 2013. For the intermediate age groups—25–34, 35–44, 45–54—housing wealth is lower in 2013 than in 1983 at the 50th and 75th percentiles, and either roughly the same or lower at the 90th percentile. However, housing wealth is somewhat higher for these groups at the 95th and 99th percentile in 2013. For the oldest age groups—55–64 and 65–74—housing wealth is up considerably at the 90th percentile and above, with the increases being especially notable in the oldest group. Many in these age groups established themselves as homeowners 30–40 years earlier, and so were in the best position to benefit from a rise in housing prices. In short, the Survey of Consumer Finances shows sharp home wealth increases only among the richest members of the oldest cohorts. Given the potential magnitudes involved and the rising prices in many coastal markets since the latest data from 2013, these patterns seem likely to have continued.

Table 3

Housing Net Worth—30 Year Changes*(in 2013 dollars)*

Percentile	1983		2013	
	18–24 year-olds	45–54 year-olds	18–24 year-olds	45–54 year-olds
50	\$0	\$87,120	\$0	\$30,000
75	\$0	\$152,159	\$0	\$109,000
90	\$24,803	\$248,818	\$5,500	\$250,000
95	\$47,488	\$353,190	\$43,000	\$400,000
99	\$141,808	\$862,359	\$95,000	\$1,000,000
Percentile	25–34 year-olds	55–64 year-olds	25–34 year-olds	55–64 year-olds
50	\$0	\$94,184	\$0	\$60,000
75	\$45,352	\$161,886	\$21,000	\$167,000
90	\$91,827	\$255,361	\$74,000	\$350,000
95	\$123,135	\$353,190	\$140,000	\$543,000
99	\$230,751	\$760,380	\$256,000	\$1,500,000
Percentile	35–44 year-olds	65–74 year-olds	35–44 year-olds	65–74 year-olds
50	\$55,799	\$82,411	\$6,000	\$100,000
75	\$118,660	\$150,136	\$58,200	\$225,000
90	\$180,763	\$279,972	\$168,000	\$440,000
95	\$247,349	\$426,936	\$300,000	\$701,000
99	\$531,198	\$941,840	\$1,025,000	\$2,000,000

Notes: Data compiled from the 1983 and 2013 Survey of Consumer Finances using publicly available samples.

The big winners from the reduction in housing supply are a small number of older Americans who bought when prices were much lower. Some of this wealth may be passed to the next generation as bequests. But much of the housing price appreciation has probably already vanished from the home equity line in housing balance sheets, and turned into consumption by retirees who have moved away from America's priciest areas. The Survey of Consumer Finances data show that home equity has risen much more slowly than aggregate housing wealth, because rising mortgage levels have offset rising home values. Younger Americans, in particular, are more likely to have paid for their homes using large mortgages than to have experienced large wealth increases.

Overall, these shifts in housing wealth seem to show that older groups in certain geographic areas are receiving most of the gains, but we have not established causality. More research is needed to identify causality, especially because nonhousing wealth is skewing in somewhat similar ways among the groups noted above.

Boom–bust housing cycles can be important redistributors of wealth, too. Pfeffer, Danziger, and Schoeni (2013) document that the median household in the Panel Study of Income Dynamics lost more than 50 percent of its wealth between 2007 and 2011, and that 83 percent of that loss came from real estate. Wolff (2014) found that

in 2010, 16.2 percent of homeowners under the age of 35 had negative home equity, but only 5.3 percent of homeowners between 55 and 64 had negative home equity.

Housing supply shapes these wealth transfers because it partially determines the extent of a housing convulsion. Glaeser, Gyourko, and Saiz (2008) show that the 1980s housing boom and subsequent bust largely bypassed places with elastic housing supply. In those years, buyers seem to have recognized that where it was easy to build, housing prices would not remain above construction costs for long. Consequently, the transfers of wealth that occurred during that boom were located primarily in places with restricted supply. The boom of the 2000s also disproportionately impacted places with limited supply, yet there were some areas such as Phoenix and Las Vegas that experienced booms despite enjoying relatively elastic housing supply. Because it takes time to build, overoptimistic buyers can still bid prices up in such markets for a few years. Eventually, the glut of new building in Las Vegas generated one of the largest of America's housing busts. Nonetheless, Mian, Rao, and Sufi (2013) show that wealth losses, and associated consumption declines, were higher in places where housing is less elastically supplied.

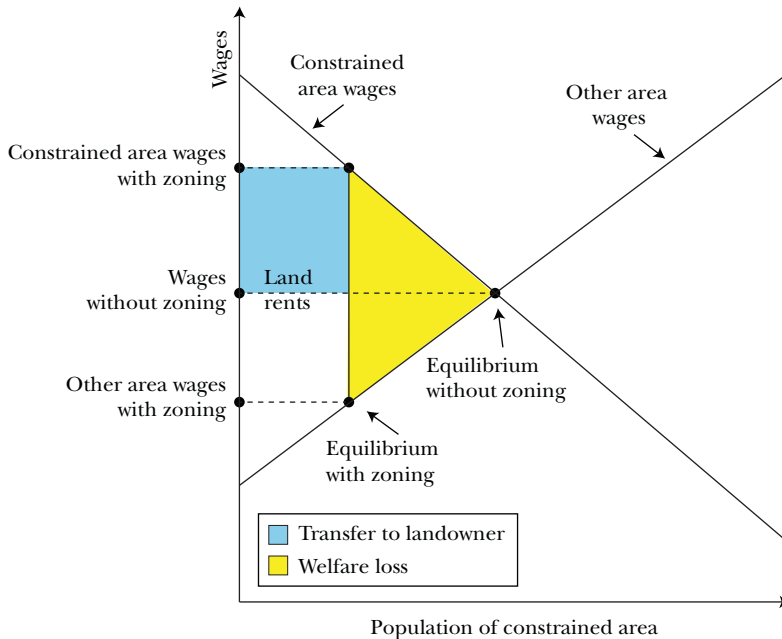
The Impact of Supply Restrictions: Urban Labor Markets and Productivity

Rising house prices represent a transfer from buyers to sellers, which is not itself obviously a welfare gain or loss. Yet constricted housing supply also generates a potentially profound distortion: people are unable to move into more desirable metropolitan areas. Hsieh and Moretti (2017) and Ganong and Shoag (2013) have raised the possibility that housing restrictions have led to a misallocation of labor that could have a serious adverse effect on US GDP. Given the large differences in productivity between Las Vegas and San Francisco, it seems virtually certain that America's GDP would rise if, for example, the San Francisco Bay Area built more housing, allowing more population to shift there from Las Vegas.

To better understand the possible GDP gains from eliminating land use controls, it is useful to make simplifying assumptions, some of which can bias the calculation in ways that are discussed at the end of this section. One such assumption is that there are no differences in negative externalities across locations. While there is little evidence to suggest that the negative effect of an extra home in a constrained area is worse than the negative effect of an extra home in an unconstrained area, if the externalities of construction were far worse in some places than others, then our estimates will overstate the benefits of deregulating housing markets.¹⁰ Another is that construction costs are the same everywhere, which as discussed above is a

¹⁰ Glaeser and Ward (2009) show that if one assumes constant construction costs (a rough but reasonable assumption, as discussed earlier), then land values are maximized when the gap between the mark-up over construction costs relative to price is equal to the absolute value of the elasticity of price with respect to density. Glaeser and Ward find that this gap is roughly ten times larger than the elasticity.

Figure 4
Welfare Consequences of Restricting Development in a Productive Market



roughly plausible assumption. We will also ignore amenity differences, so an absence of regulation will tend to equalize housing costs and wages across space.

In this setting, the potential output benefits from reallocating a fixed amount of labor from low-wage areas to high-wage areas can be seen in Figure 4, which depicts demand curves for two areas. The horizontal axis shows population in the constrained area, and a higher population in that area causes wages to decline. Population in the unconstrained area is the remainder, and so more population in the constrained area means less in the unconstrained area, leading to the upward-sloping demand curve for labor shown here. In the absence of land use controls, prices equalize across the two areas, which is shown in the point in the middle of the figure where the two curves meet. When housing supply is restricted, the wage in the restricted area is higher than in the unrestricted area.

If we assume that the demand for housing comes only from local labor markets, then we can treat each of these lines as a transformation of the labor demand curve, which in turn reflects the marginal product of labor. The lost output from misallocation is then equal to the area under the higher line from the restricted population level to the level that causes the lines to meet. This difference represents a classic deadweight loss triangle. In addition, there is a rectangle that represents the transfer to the owners of land in the more expensive area.

Hsieh and Moretti (2017) offer a set of illustrative calculations that have received considerable attention. They use a Cobb–Douglas production function in which the share of labor is 0.65 and the share of fungible capital—which will move in response to shifts in labor between cities—is 0.25. In this framework, the elasticity of labor demand is -7.5 . In their analysis, changing the housing supply regulation in just three highly constrained markets—New York, San Francisco, and San Jose—to the median for the country results in a nearly 9 percent rise in aggregate GDP. This is achieved via massive shifts in employment location. Jobs in the New York market increase by 1,010 percent, with those in San Jose rising by 689 percent. Naturally, output is much higher in these markets, too. Wages in these areas do fall, but only by 25 percent in their model.

The Cobb–Douglas production function with fungible capital is an important driver of this result in which cities can grow enormously with relatively modest decreases in wages. Assumptions about the shape of the labor demand function also have a strong effect in shaping the conclusions about the welfare losses from distortions in labor supply. Cobb–Douglas production functions tend to deliver particularly elastic labor demand curves, especially when capital is also mobile. Consequently, they lead to the conclusion that even relatively small wage gaps will result in large population misallocations and welfare losses.

Empirical estimates of the link between wages and labor demand at the local level are often much lower than predictions from a Cobb–Douglas function. Beaudry, Green, and Sand (2014) present city-level labor demand elasticities that seem matched to our needs. They find a city-level labor elasticity of -0.3 , which suggests that the overall impact is 0.7 percent of GDP. Their city-industry-level estimates are larger (-1.0), and those would imply a misallocation cost equal to about 2 percent GDP. Past demand elasticities have typically ranged from -0.25 to -1.0 (Hammermesh 1991). In addition, we have experimented with back-of-the-envelope estimates of these gains using linear demand functions for labor, rather than the curved demand functions implied by the Cobb–Douglas function. While the precise outcome depends on the parameters used, such calculations suggest that 2 percent of GDP may be an upper bound on the gains from the reallocation of labor.¹¹

We view any gain that involves adding several percent to GDP as quite sizeable and worth pursuing. But clearly, considerable work remains to be done in pinning down the likely size of the potential gains. This follow-up work might also keep in mind the likely biases from our simplifying assumptions.

In empirically estimating the costs of labor misallocation, we also should be cognizant of the problem of omitted human capital. The average worker in Tulsa will not necessarily earn the average wages in Silicon Valley by moving to San Jose. Any misallocation calculation will typically increase with the variance in perceived productivities, and the noise created by unobserved human capital heterogeneity will generally cause an overestimate of misallocation costs.

¹¹ For examples of these calculations, see the online Appendix available with this paper at <http://e-jep.org>.

Another issue is that if places with higher human-capital-adjusted wages typically have more amenities (because cities are more likely to form in areas that are either productive or nice or both), then differences in the cost of housing will lead to an overestimate of the true differences in productivity. Conversely, there are some examples of large urban areas, like Orlando and Miami, that have lower-than-average wages and housing prices but also have the amenity of Florida sunshine. Again, not taking that amenity into account will bias attempts to infer productivity from wage levels.

On the other side, our calculations reflect only an estimate based on static factors. One might speculate that Silicon Valley and other high-productivity urban areas are about creativity, as well as high wages. If so, then, more Silicon Valley residents could also mean more technological innovation and faster productivity growth. If agglomeration economies are important, and tend to increase with population size, then this will attenuate the downward impact of added population on earnings. We are ignoring the impact that higher output has on product demand, which is captured in Hsieh and Moretti (2017), which also pushes earnings and the benefits from better labor allocation upward.

Next, the reallocation of population implied in this analysis would mean that the overwhelming majority of cities would lose population, while a few, such as New York and the San Francisco Bay Area, would gain substantial numbers of workers. In some of our back-of-the-envelope calculations, the entire population of certain cities would depart! As discussed earlier in the paper, declines in local demand for housing, given the durability of housing, can easily cause housing prices in those cities to fall—which further complicates calculations about what reallocation of population and welfare gains might be possible as a result of less-stringent limits on housing construction. Finally, we stress again that we have assumed away any benefits that regulation might create by reducing the negative externalities from construction, so these estimates should be taken as suggestive, not definitive.

Conclusion

When housing supply is highly regulated in a certain metropolitan area, housing prices are higher and population growth is smaller relative to the level of demand. While most of America has experienced little growth in housing wealth over the past 30 years, the older, richer buyers in America's most regulated areas have experienced significant increases in housing equity. The regulation of America's most productive places seems to have led labor to locate in places where wages and prices are lower, reducing America's overall economic output in the process.

Advocates of land use restrictions emphasize the negative externalities of building. Certainly, new construction can lead to more crowded schools and roads, and it is costly to create new infrastructure to lower congestion. Hence, the optimal tax on new building is positive, not zero. However, there is as yet no consensus about

the overall welfare implications of heightened land use controls. Any model-based assessment inevitably relies on various assumptions about the different aspects of regulation and how they are valued in agents' utility functions.

Empirical investigations of the local costs and benefits of restricting building generally conclude that the negative externalities are not nearly large enough to justify the costs of regulation. Adding the costs from substitute building in other markets generally strengthens this conclusion, as Glaeser and Kahn (2010) show that in America building restrictions are higher in places that have lower carbon emissions per household. If California's restrictions induce more building in Texas and Arizona, then their net environmental effect could be negative in aggregate. If restrictions on building limit an efficient geographical reallocation of labor, then estimates based on local externalities would miss this effect, too.

If the welfare and output gains from reducing regulation of housing construction are large, then why don't we see more policy interventions to permit more building in markets such as San Francisco? The great challenge facing attempts to loosen local housing restrictions is that existing homeowners do not want more affordable homes: they want the value of their asset to cost more, not less. They also may not like the idea that new housing will bring in more people, including those from different socioeconomic groups.

There have been some attempts at the state level to soften severe local land use restrictions, but they have not been successful. Massachusetts is particularly instructive because it has used both top-down regulatory reform and incentives to encourage local building. Massachusetts Chapter 40B provides builders with a tool to bypass local rules. If developers are building enough formally defined affordable units in unaffordable areas, they can bypass local zoning rules. Yet localities still are able to find tools to limit local construction, and the cost of providing price-controlled affordable units lowers the incentive for developers to build. It is difficult to assess the overall impact of 40B, especially since both builder and community often face incentives to avoid building "affordable" units. Standard game theoretic arguments suggest that 40B should never itself be used, but rather work primarily by changing the fallback option of the developer. Massachusetts has also tried to create stronger incentives for local building with Chapters 40R and 40S. These parts of their law allow for transfers to the localities themselves, so builders are not capturing all the benefits. Even so, the Boston market and other high-cost areas in the state have not seen meaningful surges in new housing development.

This suggests that more fiscal resources will be needed to convince local residents to bear the costs arising from new development. On pure efficiency grounds, one could argue that the federal government should provide such resources, but from a political economy perspective, the median taxpayer in the nation effectively transferring resources to much wealthier residents of metropolitan areas like San Francisco seems challenging to say the least. However daunting the task, the potential benefits look to be large enough that economists and policymakers should keep trying to devise a workable policy intervention.

■ *Edward Glaeser thanks the Taubman Center for State and Local Government at Harvard University for financial support. Joseph Gyourko thanks the Research Sponsor Program of the Zell/Lurie Real Estate Center at the Wharton School for financial support. The excellent research assistance of Yue Cao, Matt Davis, and Xinyu Ma is much appreciated, but the authors remain responsible for any errors.*

References

- Barbosa, Filipe, Jonathan Woetzel, Jan Mischke, Maria Joao Ribeirinho, Mukund Sridhar, Matthew Parsons, Nick Bertram, and Stephanie Brown.** 2017. *Reinventing Construction through a Productivity Revolution*. Report, McKinsey Global Institute, February, <http://www.mckinsey.com/industries/capital-projects-and-infrastructure/our-insights/Reinventing-construction-through-a-productivity-revolution>.
- Beaudry, Paul, David A. Green, and Benjamin M. Sand.** 2014. "In Search of Labor Demand." NBER Working Paper 20568, October.
- Cheshire, Paul, and Steven Sheppard.** 2002. "The Welfare Economics of Land Use Planning." *Journal of Urban Economics* 52(2): 242–69.
- Davis, Morris A., and Jonathon Heathcote.** 2007. "The Price and Quantity of Residential Land in the United States." *Journal of Monetary Economics* 54(8): 2595–2620.
- Davis, Morris A., and Michael G. Palumbo.** 2008. "The Price of Residential Land in Large US Cities." *Journal of Urban Economics* 63(1): 352–84.
- Diamond, Rebecca.** 2016. "The Determinants and Welfare Implications of US Workers' Diverging Location Choices by Skill: 1980–2000." *American Economic Review* 106(3): 479–524.
- Fishel, William A.** 2001. *The Homevoter Hypothesis: How Home Values Influence Local Government Taxation, School Finance, and Land-Use Policies*. Cambridge, MA: Harvard University Press.
- Frieden, Bernard J.** 1979. "The New Regulation Comes to Suburbia." *Public Interest*, Spring 1979: 15–27.
- Ganong Peter, and Daniel Shoag.** 2013. "Why Has Regional Income Convergence in the U.S. Declined?" Harvard Kennedy School Working Paper No. RWP12-028, March 28.
- Glaeser, Edward L., and Joseph Gyourko.** 2003. "The Impact of Building Restrictions on Housing Affordability." *FRBNY Economic Policy Review* 9(2): 21–39.
- Glaeser, Edward L., and Joseph Gyourko.** 2005. "Urban Decline and Durable Housing." *Journal of Political Economy* 113(2): 345–75.
- Glaeser, Edward L., and Joseph Gyourko.** 2008. *Rethinking Federal Housing Policy: How to Make Housing Plentiful and Affordable*. Washington, DC: AEI Press.
- Glaeser, Edward L., and Joseph Gyourko.** 2017. "The Economic Implications of Housing Supply." Working Paper 802, Zell/Lurie Real Estate Center, January 4.
- Glaeser, Edward L., Joseph Gyourko, and Albert Saiz.** 2008. "Housing Supply and Housing Bubbles." *Journal of Urban Economics* 64(2): 198–217.
- Glaeser, Edward L., Joseph Gyourko, and Raven Saks.** 2005. "Why is Manhattan So Expensive? Regulation and the Rise in Housing Prices." *Journal of Law and Economics* 48(2): 331–69.
- Glaeser, Edward L., and Matthew E. Kahn.** 2010. "The Greenness of Cities: Carbon Dioxide Emissions and Urban Development." *Journal of Urban Economics* 67(3): 404–418.
- Glaeser, Edward L., and Bryce A. Ward.** 2009. "The Causes and Consequences of Land Use Regulation: Evidence from Greater Boston." *Journal of Urban Economics* 65(3): 265–78.
- Gyourko, Joseph, Christopher Mayer, and Todd Sinai.** 2013. "Superstar Cities." *American Economic Journal: Economic Policy* 5(4): 167–99.
- Gyourko, Joseph, and Raven Molloy.** 2015. "Regulation and Housing Supply." Chap. 19 in *Handbook of Regional and Urban Economics* 5B, edited by Gilles Duranton, J. Vernon Henderson, and William Strange. Amsterdam: Elsevier.
- Gyourko, Joseph, and Albert Saiz.** 2006. "Construction Costs and the Supply of Housing

- Structure." *Journal of Regional Science* 46(4): 661–80.
- Gyourko, Joseph, Albert Saiz, and Anita Summers.** 2008. "A New Measure of the Local Regulatory Environment for Housing Markets: The Wharton Residential Land Use Regulatory Index." *Urban Studies* 45(3): 693–721.
- Hammermesh, Daniel S.** 1991. "Labor Demand: What Do We Know? What Don't We Know?" NBER Working Paper 3890, November.
- Hayashi, Fumio.** 1982. "Tobin's Marginal q and Average q : A Neoclassical Interpretation." *Econometrica* 50(1): 213–24.
- Hsieh, Chang-Tai, and Enrico Moretti.** 2017. "Housing Constraints and Spatial Misallocation." NBER Working Paper 21154, May 18.
- La Cava, Gianni.** 2016. "Housing Prices, Mortgage Interest Rates and the Rising Share of Capital Income in the United States." BIS Working Paper 572, July.
- Mian, Atif R., Kamalesh Rao, and Amir Sufi.** 2013. "Household Balance Sheets, Consumption and the Economic Slump." Chicago Booth Research Paper 13-42.
- Moretti, Enrico.** 2013. "Real Wage Inequality." *American Economic Journal: Applied Economics* 5(1): 65–103.
- Pfeffer, Fabian T., Sheldon Danziger, and Robert F. Schoeni.** 2013. "Wealth Disparities Before and After the Great Recession." *Annals of the American Academy of Political and Social Science* 650(1): 98–123.
- Piketty, Thomas.** 2014. *Capital in the Twenty-First Century*. Cambridge, MA: Harvard University Press.
- Rognlie, Matthew.** 2015. "Deciphering the Fall and Rise in Net Capital Share: Accumulation or Scarcity?" *Brookings Papers on Economic Activity*, Spring.
- Rosenthal, Stuart, and William Strange.** 2008. "The Attenuation of Human Capital Spillovers." *Journal of Urban Economics* 64(2): 373–89.
- RSMMeans.** 2015. *RSMMeans Building Construction Cost Data*, 73rd Annual Edition. Kingston, MA: RSMMeans.
- Saiz, Albert.** 2010. "The Geographic Determinants of Housing Supply." *Quarterly Journal of Economics* 125(3): 1253–96.
- Sinai, Todd, and Nicholas S. Souleles.** 2005. "Owner-Occupied Housing as a Hedge Against Rent Risk." *Quarterly Journal of Economics* 120(2): 763–89.
- Turner, Matthew A., Andrew Haughwout, Wilbert van der Klaauw.** 2014. "Land Use Regulation and Welfare." *Econometrica* 82(4): 1341–1403.
- Wolff, Edward N.** 2014. "Household Wealth Trends in the United States, 1962–2013: What Happened over the Great Recession?" NBER Paper 20733.

This article has been cited by:

1. Michael D. Eriksen, Anthony W. Orlando. 2024. A cost decomposition of break-even rents for new multifamily housing development. *Journal of Housing Economics* **66**, 102012. [[Crossref](#)]
2. Trevor Incerti. 2024. Countering Capture in Local Politics: Evidence from Eight Field Experiments. *The Journal of Politics* **86**:4, 1603-1607. [[Crossref](#)]
3. Patrycja Konieczna. 2024. Perceptions of the Real Estate Market by Students Representing Generation Z: Housing Preferences and Investment Plans. *Real Estate Management and Valuation* . [[Crossref](#)]
4. Dorian Antonio Bautista-Hernández. 2024. Jobs-Housing Imbalances, Urban Segregation, and Intra-metropolitan Commute Flows in Mexico City. *Journal of Planning Education and Research* **44**:3, 1757-1774. [[Crossref](#)]
5. Wei Gao, Shan Wei, Chen Geng, Jing He, Xiuting Li, Shuqin Liu. 2024. The Role of the Real Estate Sector in the Economy: Cross-National Disparities and Their Determinants. *Sustainability* **16**:17, 7697. [[Crossref](#)]
6. Chuanhao Lin. 2024. Do households value lower density: Theory, evidence, and implications from Washington, DC. *Regional Science and Urban Economics* **108**, 104023. [[Crossref](#)]
7. Simon Büchler, Elena Lutz. 2024. Making housing affordable? The local effects of relaxing land-use regulation. *Journal of Urban Economics* **143**, 103689. [[Crossref](#)]
8. Mohammad Ismail, Mats Wilhelmsson. 2024. Redefining Stockholm: examining the consequences of urban development on socioeconomic factors and affordability. *Journal of Housing and the Built Environment* **39**:3, 1209-1229. [[Crossref](#)]
9. Huixin Zheng, Nicholas Marantz, Jae Hong Kim, John R. Hipp. 2024. Dissolving Districts: Did Property Values Fall When California Terminated Its Redevelopment Agencies?. *Economic Development Quarterly* **77** . [[Crossref](#)]
10. Anastasios G. Malliaris, Mary Malliaris, Mark S. Rzepczynski. 2024. One Man's Bubble Is Another Man's Rational Behavior: Comparing Alternative Macroeconomic Hypotheses for the US Housing Market. *Journal of Risk and Financial Management* **17**:8, 349. [[Crossref](#)]
11. Kenneth S. Rogoff, Yuanchen Yang. 2024. A tale of tier 3 cities. *Journal of International Economics* **492**, 103989. [[Crossref](#)]
12. N.R. Brouwer, Jessica Trounstein. 2024. NIMBYs, YIMBYs, and the Politics of Land Use in American Cities. *Annual Review of Political Science* **27**:1, 165-184. [[Crossref](#)]
13. Nicholas J. Marantz, Christopher S. Elmendorf, Youjin B. Kim. 2024. Overseeing Infill. *Journal of the American Planning Association* **90**:3, 421-433. [[Crossref](#)]
14. Steven Bond-Smith. 2024. Combining agglomeration economies and endogenous growth without scale effects. *Spatial Economic Analysis* **19**:3, 287-308. [[Crossref](#)]
15. Boning Li, Wen-Chi Liao, Weizeng Sun, Yongxuan Zeng, Siqi Zheng. 2024. The US-China Trade War: Quantify the Negative Shocks to Local Housing Markets and Land-Based Finance in Chinese Cities. *Journal of Real Estate Research* **46**:3, 308-335. [[Crossref](#)]
16. David Mitre-Becerril, John M. MacDonald. 2024. Does urban development influence crime? Evidence from Philadelphia's new zoning regulations. *Journal of Urban Economics* **142**, 103667. [[Crossref](#)]
17. Kent Eliasson, Olle Westerlund. 2024. Housing markets and geographical labour mobility to high-productivity regions: The case of Stockholm. *European Urban and Regional Studies* **31**:3, 259-280. [[Crossref](#)]
18. Ingrid Gould Ellen. 2024. Neighborhoods in the 21st century: What do we know, and what do we still have to learn?. *Real Estate Economics* **52**:4, 997-1019. [[Crossref](#)]

19. Nima Dahir, Jackelyn Hwang. 2024. Who Owns the Neighborhood? Ethnoracial Composition of Property Ownership and Neighborhood Trajectories in San Francisco. *City & Community* 9. . [[Crossref](#)]
20. Steven Bond-Smith, Chris Leishman. 2024. Threshold regressions for more objective urban and regional policies. *Cities* 149, 104925. [[Crossref](#)]
21. Xian Zheng, Xinyu Zhang, Xiaoyuan Zou. 2024. Balancing the scales: How housing supply regulation shapes household wealth inequality in China. *Cities* 149, 104963. [[Crossref](#)]
22. Jinwoong Lee. 2024. What factors drive house prices in the USA? Sign restricted VAR approach. *Empirical Economics* 66:6, 2533-2556. [[Crossref](#)]
23. Euijune Kim, Ayoung Kim, Kyung-Min Nam. 2024. Impacts of demand and supply-side interventions on South Korea's housing markets: a dynamic housing-CGE analysis. *The Annals of Regional Science* 73:1, 397-429. [[Crossref](#)]
24. Ünsal Özdilek. 2024. On sustainable land rent. *Frontiers in Sustainability* 5. . [[Crossref](#)]
25. Meng Zhang, Hong Wang, Hao Wang, Atasya Binti Osmadi. 2024. Digital economy, land resource mismatch, and urban housing costs: Evidence from China's digital governance policy perspective. *Resources Policy* 92, 105031. [[Crossref](#)]
26. Ramaprasad Bhar, A. G. Malliaris, Mary Malliaris, Mark S. Rzepczynski. 2024. Five themes of U.S. home price cycles: a dynamic modelling approach. *Annals of Operations Research* 59. . [[Crossref](#)]
27. Ka Shing Cheung, Paavo Monkkonen, Chung Yim Yiu. 2024. The heterogeneous impacts of widespread upzoning: Lessons from Auckland, New Zealand. *Urban Studies* 61:5, 943-967. [[Crossref](#)]
28. Justin de Benedictis-Kessner, Daniel Jones, Christopher Warshaw. 2024. How partisanship in cities influences housing policy. *American Journal of Political Science* 40. . [[Crossref](#)]
29. Harold Wolman, William Barnes, Jennifer Clark, Samantha Friedman, Richard Harris, Jeffrey Lin, Thomas Ogorzalek. 2024. The state of urban research: Views across the disciplines. *Journal of Urban Affairs* 46:3, 425-462. [[Crossref](#)]
30. Cameron K. Murray, Joshua C. Gordon. 2024. Land as Airspace: How Rezoning Privatizes Public Space (and Why Governments Should Not Give It Away for Free). *Housing Policy Debate* 34:2, 228-241. [[Crossref](#)]
31. Hon Chung Hui. 2024. Could financialisation explain why developers are building more expensive houses? Evidence for Malaysia. *International Journal of Housing Markets and Analysis* 51. . [[Crossref](#)]
32. Luke Petach. 2024. Natural amenities and Neo-Hobbesian local public finance. *Constitutional Political Economy* 35:1, 1-21. [[Crossref](#)]
33. Eric Fesselmeier, Haoming Liu, Louisa Poco. 2024. Within-development density and housing prices in Singapore. *Journal of Regional Science* 64:2, 406-427. [[Crossref](#)]
34. Simon C Büchler, Dongxiao Niu, Anne K Thompson, Siqi Zheng. 2024. The impact of human capital and housing supply on urban growth. *Urban Studies* 61:2, 214-230. [[Crossref](#)]
35. Xiaohuan Lan. Urbanization and Imbalances 177-212. [[Crossref](#)]
36. Chao Liu, Edmund Lou, Wei Xiang. 2024. Income Inequality, House Prices, and Housing Regulations. *SSRN Electronic Journal* 107. . [[Crossref](#)]
37. Niti Rattanaprichavej, Monthinee Teeramungcalanon. 2024. A Location Effect on the Capital Gains of Condominium Investment. *SSRN Electronic Journal* 12. . [[Crossref](#)]
38. Arpita Ghosh, Brendon McConnell, Jaime Millán-Quijano. 2024. Do Homebuyers Value Energy Efficiency? Evidence From an Information Shock. *SSRN Electronic Journal* . [[Crossref](#)]
39. George R. Zodrow. 2023. 75 Years of Research on the Property Tax. *National Tax Journal* 76:4, 909-940. [[Crossref](#)]

40. James M. Strickland, Dallin Overstreet. 2023. Rent Control for Homeowners? Acquisition-Value Assessments and Housing Costs. *Public Finance Review* 31. . [[Crossref](#)]
41. Cameron Murray, Peter Phibbs. 2023. Evidence-lite zone: the weak evidence behind the economic case against planning regulation. *Town Planning Review* 94:6, 597-610. [[Crossref](#)]
42. Jovanna Rosen, Victoria Ciudad-Real, Sean Angst, Gary Painter. 2023. Rental Affordability, Coping Strategies, and Impacts in Diverse Immigrant Communities. *Housing Policy Debate* 33:6, 1313-1332. [[Crossref](#)]
43. Yonah Freemark. 2023. Zoning Change: Upzonings, Downzonings, and Their Impacts on Residential Construction, Housing Costs, and Neighborhood Demographics. *Journal of Planning Literature* 38:4, 548-570. [[Crossref](#)]
44. Graeme Guthrie. 2023. Land Hoarding and Urban Development. *The Journal of Real Estate Finance and Economics* 67:4, 753-793. [[Crossref](#)]
45. Jenna L. Dublin-Boc. 2023. Zoning for character: Contextual rezoning and socioeconomic change in New York City neighborhoods, 1986–2019. *Land Use Policy* 134, 106910. [[Crossref](#)]
46. Jianhua Zhang, Xiaolong Liu, Dimitris Ballas. 2023. Spatial and relational peer effects on environmental behavioral imitation. *Environmental Economics and Policy Studies* 25:4, 575-599. [[Crossref](#)]
47. Jengei Hong, Doojin Ryu. 2023. Expectations and the housing market: A model of house price dynamics. *Bulletin of Economic Research* 75:4, 1242-1266. [[Crossref](#)]
48. KNUT ARE AASTVEIT, BRUNO ALBUQUERQUE, ANDRÉ K. ANUNDTSEN. 2023. Changing Supply Elasticities and Regional Housing Booms. *Journal of Money, Credit and Banking* 55:7, 1749-1783. [[Crossref](#)]
49. Matthew Mleczo, Matthew Desmond. 2023. Using natural language processing to construct a National Zoning and Land Use Database. *Urban Studies* 60:13, 2564-2584. [[Crossref](#)]
50. Johan Mottelson. 2023. On informal housing supply restrictions and livelihood in informal settlements: Implications for sustainable development. *Sustainable Development* 31:5, 3566-3578. [[Crossref](#)]
51. Simon Büchler, Maximilian v. Ehrlich. 2023. Quantifying land-use regulation and its determinants. *Journal of Economic Geography* 23:5, 1059-1096. [[Crossref](#)]
52. Seth Wynes, H. Damon Matthews. 2023. Missing density: assessing support for compact cities among Canadian municipal officials and members of the public. *Climate Policy* 23:8, 1019-1032. [[Crossref](#)]
53. Tal Alster. 2023. Homeowners Saying “Yes, In My Back Yard”: Evidence from Israel. *Urban Affairs Review* 59:5, 1408-1440. [[Crossref](#)]
54. Alexander Styhre, Sara Brorström. 2023. The mundanity of cost cutting: The value of small wins in affordable housing production. *Scandinavian Journal of Management* 39:3, 101276. [[Crossref](#)]
55. Elias Oikarinen, Steven C. Bourassa, Martin Hoesli, Janne Engblom. 2023. Revisiting metropolitan house price-income relationships. *Journal of Housing Economics* 61, 101946. [[Crossref](#)]
56. Ioannis Tikoudis. 2023. Revisiting the Pigouvian tax in urban roads: Housing supply restrictions, leaking profits and spatial inequality. *Economics of Transportation* 35, 100324. [[Crossref](#)]
57. Nazneen Ahmad, Hien Nguyen. 2023. Homebuilders’ Sentiment and Housing Activity: Evidence of Differential Regional Effects. *Journal of Housing Research* 10, 1-18. [[Crossref](#)]
58. Krzysztof Olszewski, Jacek Łaszek, Joanna Waszczuk. 2023. An unequal reaction of housing starts to house prices in different regions of Poland. *Bank i Kredyt* Vol. 54:No. 4, 437-458. [[Crossref](#)]
59. Michael Manville. 2023. Liberals and Housing: A Study in Ambivalence. *Housing Policy Debate* 33:4, 844-864. [[Crossref](#)]

60. Kevin Corinth, Amelia Irvine. 2023. JUE Insight: The Effect of Relaxing Local Housing Market Regulations on Federal Rental Assistance Programs. *Journal of Urban Economics* 136, 103572. [[Crossref](#)]
61. Philipp Reichle, Jarko Fidrmuc, Fabian Reck. 2023. The sharing economy and housing markets in selected European cities. *Journal of Housing Economics* 60, 101914. [[Crossref](#)]
62. Patrycja Konieczna, Natalia Konar. 2023. Real Estate Market Perceptions, Housing and Investment Plans of Students and Graduates. *Real Estate Management and Valuation* 31:2, 52-65. [[Crossref](#)]
63. Juan Carlos Lopez, Tadashi Morita. 2023. Inter- and intraregional inequality in a spatial economy. *Journal of Regional Science* 88. . [[Crossref](#)]
64. Nathan Mark Hutson, Anthony W. Orlando. 2023. The effects of COVID-19 on downtown land use: Evidence from four U.S. cities. *Journal of Urban Affairs* 12, 1-19. [[Crossref](#)]
65. Sviatlana Engerstam, Abukar Warsame, Mats Wilhelmsson. 2023. Exploring the Effects of Municipal Land and Building Policies on Apartment Size in New Residential Construction in Sweden. *Journal of Risk and Financial Management* 16:4, 220. [[Crossref](#)]
66. VADYM POKOLENKO, OLENA BONDAR, OLEKSII YASCHENKO, IRINA YAKYMCHUK, NATALIJA LATANIUK. 2023. DEVELOPMENT OF CONSTRUCTION PROJECTS AS A COMPOUND AGGREGATED SYSTEM. *AD ALTA: Journal of Interdisciplinary Research* 13:1, 31-39. [[Crossref](#)]
67. Chung Yim Yiu. 2023. Are Central Banks' Monetary Policies the Future of Housing Affordability Solutions. *Urban Science* 7:1, 18. [[Crossref](#)]
68. Ning Jia, Raven Molloy, Christopher Smith, Abigail Wozniak. 2023. The Economics of Internal Migration: Advances and Policy Questions. *Journal of Economic Literature* 61:1, 144-180. [[Abstract](#)] [[View PDF article](#)] [[PDF with links](#)]
69. Patrick Baylis, Judson Boomhower. 2023. The Economic Incidence of Wildfire Suppression in the United States. *American Economic Journal: Applied Economics* 15:1, 442-473. [[Abstract](#)] [[View PDF article](#)] [[PDF with links](#)]
70. Junfu Zhang. 2023. JUE Insight: Measuring the Stringency of Land Use Regulation Using a Shadow Price Approach. *Journal of Urban Economics* 133, 103461. [[Crossref](#)]
71. Cristina Bratu, Oskari Harjunen, Tuukka Saarimaa. 2023. JUE Insight: City-wide effects of new housing supply: Evidence from moving chains. *Journal of Urban Economics* 133, 103528. [[Crossref](#)]
72. Wen-Chi Liao, Kecen Jing, Yilan Luo. 2023. Suburban Housing Creation: Result of Transit Network Expansion in Central City. *SSRN Electronic Journal* 83. . [[Crossref](#)]
73. Joseph Gyourko, Sean McCulloch. 2023. Minimum Lot Size Restrictions: Impacts on Urban Form and House Price at the Border. *SSRN Electronic Journal* 46. . [[Crossref](#)]
74. Alexander Bartik, Arpit Gupta, Daniel Milo. 2023. The Costs of Housing Regulation: Evidence From Generative Regulatory Measurement. *SSRN Electronic Journal* 27. . [[Crossref](#)]
75. Gilles Duranton, Diego Puga. 2023. Urban Growth and Its Aggregate Implications. *Econometrica* 91:6, 2219-2259. [[Crossref](#)]
76. Fernando V. Ferreira, Joseph Gyourko. 2023. Does Political Partisanship Affect Housing Supply? Evidence from US Cities. *SSRN Electronic Journal* 24. . [[Crossref](#)]
77. Arpita Ghosh, Brendon McConnell, Jaime Millán-Quijano. 2023. Do Homebuyers Value Energy Efficiency? Evidence From an Information Shock. *SSRN Electronic Journal* . [[Crossref](#)]
78. João Fragoso Januário, Carlos Oliveira Cruz. 2023. The Impact of the 2008 Financial Crisis on Lisbon's Housing Prices. *Journal of Risk and Financial Management* 16:1, 46. [[Crossref](#)]

79. Xi Yang. 2023. More Credit, Fewer Babies? Bank Credit Expansion, House Price, and Fertility. *SSRN Electronic Journal* **54**. . [[Crossref](#)]
80. Stefan Siedentop, Stephan Schmidt, Alistair Dunlop. 2022. Managing Urban Growth – an Overview of the Literature. *Raumforschung und Raumordnung | Spatial Research and Planning* **80**:6, 659-677. [[Crossref](#)]
81. Daniel Lavy, Ravit Hananel. 2022. Homeownership for Whom? Going beyond the illusion of the conventional measurement. *Habitat International* **130**, 102713. [[Crossref](#)]
82. Wei Chen, Zaiyan Wei, Karen Xie. 2022. The Battle for Homes: How Does Home Sharing Disrupt Local Residential Markets?. *Management Science* **68**:12, 8589-8612. [[Crossref](#)]
83. Alexander Billy, Michael Packard. 2022. Crime and the Mariel Boatlift. *International Review of Law and Economics* **72**, 106094. [[Crossref](#)]
84. Xiaodi Li. 2022. Do new housing units in your backyard raise your rents?. *Journal of Economic Geography* **22**:6, 1309-1352. [[Crossref](#)]
85. Andrew Schouten. 2022. Residential Location and Household Spending: Exploring the Relationship Between Neighborhood Characteristics and Transportation and Housing Costs. *Urban Affairs Review* **58**:6, 1554-1584. [[Crossref](#)]
86. Remi Jedwab, Jason Barr, Jan K. Brueckner. 2022. Cities Without Skylines: Worldwide Building-Height Gaps and their Possible Determinants and Implications. *Journal of Urban Economics* **132**, 103507. [[Crossref](#)]
87. Knut Are Aastveit, André K. Anundsen. 2022. Asymmetric Effects of Monetary Policy in Regional Housing Markets. *American Economic Journal: Macroeconomics* **14**:4, 499-529. [[Abstract](#)] [[View PDF article](#)] [[PDF with links](#)]
88. William Larson, Anthony Yezer, Weihua Zhao. 2022. Urban planning policies and the cost of living in large cities. *Regional Science and Urban Economics* **96**, 103802. [[Crossref](#)]
89. Daniel Melser, Rachel Ong ViforJ, Gavin Wood. 2022. Exploring the many housing elasticities of supply: The case of Australia. *Cities* **128**, 103817. [[Crossref](#)]
90. Francesco Findeisen. 2022. The Housing Crisis in Superstar Cities: Labour Markets, Price Inflation, and Financialization. *European Journal of Sociology* **12749**, 1-30. [[Crossref](#)]
91. Luke Petach. 2022. Income stagnation and housing affordability in the United States. *Review of Social Economy* **80**:3, 359-386. [[Crossref](#)]
92. Alla Koblyakova, Larisa Fleishman, Orly Furman. 2022. Accuracy of Households' Dwelling Valuations, Housing Demand and Mortgage Decisions: Israeli Case. *The Journal of Real Estate Finance and Economics* **65**:1, 48-74. [[Crossref](#)]
93. Juan Carlos Lopez. 2022. Will Increasing Housing Supply Reduce Urban Inequality?. *International Regional Science Review* **45**:4, 383-416. [[Crossref](#)]
94. Nirupama Kulkarni, Ulrike Malmendier. 2022. Homeownership segregation. *Journal of Monetary Economics* **129**, 123-149. [[Crossref](#)]
95. Franklin Obeng-Odoom. 2022. Urban housing analysis and theories of value. *Cities* **126**, 103714. [[Crossref](#)]
96. Christian Dustmann, Bernd Fitzenberger, Markus Zimmermann. 2022. Housing Expenditure and Income Inequality. *The Economic Journal* **132**:645, 1709-1736. [[Crossref](#)]
97. Evelyn Blumenberg, Madeline Wander. 2022. Housing affordability and commute distance. *Urban Geography* **111**, 1-20. [[Crossref](#)]
98. N. K. Kurichev. 2022. Spatial Equilibrium? The Difference of Real Income, Housing Markets, and Migration Flows between Russian Cities. *Regional Research of Russia* **12**:2, 215-226. [[Crossref](#)]

99. Michael Ball, Edward Shepherd, Pete Wyatt. 2022. The relationship between residential development land prices and house prices. *Town Planning Review* **93**:4, 401-421. [[Crossref](#)]
100. Matthew Davis, Fernando Ferreira. 2022. Housing disease and public school finances. *Economics of Education Review* **88**, 102236. [[Crossref](#)]
101. Sebastian Eichhorn, David Pehlke. 2022. Unintended effects of regional planning in Germany. *Growth and Change* **53**:2, 933-950. [[Crossref](#)]
102. Matthew M. Brooks. 2022. The Changing Landscape of Affordable Housing in the Rural and Urban United States, 1990–2016*. *Rural Sociology* **87**:2, 511-546. [[Crossref](#)]
103. Michael D. Eriksen, Anthony W. Orlando. 2022. Returns to Scale in Residential Construction: The Marginal Impact of Building Height. *Real Estate Economics* **50**:2, 534-564. [[Crossref](#)]
104. Yao Luo, Chen Li, Junjun Zhi, Qun Wu, Jiajing Yao. 2022. Policy Innovation of Life Cycle Management of Industrial Land Supply in China. *Land* **11**:6, 859. [[Crossref](#)]
105. Steffen Wetzstein. 2022. Toward Affordable Cities? Critically Exploring the Market-Based Housing Supply Policy Proposition. *Housing Policy Debate* **32**:3, 506-532. [[Crossref](#)]
106. Qiao Wang, Xiuyan Liu, Sam Hak Kan Tang, Cong Du. 2022. Land use policy and employment growth- evidence from China. *Habitat International* **123**, 102546. [[Crossref](#)]
107. Sharon Gilad, Saar Alon-Barkat, Nitzan Faibish, Sarah Goldberg. 2022. Leveraging city officials' professional and social Identities to facilitate affordable housing. *Political Geography* **94**, 102570. [[Crossref](#)]
108. Eliška Vejchodská, Ana Paula Barreira, Armands Auziņš, Evelin Jürgenson, Steven Fowles, Vida Maliene. 2022. Bridging land value capture with land rent narratives. *Land Use Policy* **114**, 105956. [[Crossref](#)]
109. Carolin Martin, Noemi Schmitt, Frank Westerhoff. 2022. HOUSING MARKETS, EXPECTATION FORMATION AND INTEREST RATES. *Macroeconomic Dynamics* **26**:2, 491-532. [[Crossref](#)]
110. Thomas Davidoff, Andrey Pavlov, Tsur Somerville. 2022. Not in my neighbour's back yard? Laneway homes and neighbours' property values. *Journal of Urban Economics* **128**, 103405. [[Crossref](#)]
111. Mthobisi Nhlabathi, Freddy Marilahimbilu Mgiba, Neo Ligaraba. 2022. Social Media Marketing Attributes, Sandton's Rental Market Brand Image, and the Millennials' Rental Preference: An Empirical Study. *Real Estate Management and Valuation* **30**:1, 34-52. [[Crossref](#)]
112. Ning Jia, Raven Molloy, Christopher Smith, Abigail Wozniak. 2022. The Economics of Internal Migration: Advances and Policy Questions. *Finance and Economics Discussion Series* **2022**:003, 1-46. [[Crossref](#)]
113. Cameron K. Murray. 2022. A Housing Supply Absorption Rate Equation. *The Journal of Real Estate Finance and Economics* **64**:2, 228-246. [[Crossref](#)]
114. David Stenvall, Axel Hedström, Naoyuki Yoshino, Gazi Salah Uddin, Farhad Taghizadeh-Hesary. 2022. Nonlinear tail dependence between the housing and energy markets. *Energy Economics* **106**, 105771. [[Crossref](#)]
115. Arthur Acolin, Gregg Colburn, Rebecca J. Walter. 2022. How do single-family homeowners value residential and commercial density? It depends. *Land Use Policy* **113**, 105898. [[Crossref](#)]
116. Adam Millard-Ball, Jeremy West, Nazanin Rezaei, Garima Desai. 2022. What do residential lotteries show us about transportation choices?. *Urban Studies* **59**:2, 434-452. [[Crossref](#)]
117. Fabian Braesemann, Vili Lehdonvirta, Otto Kässi. 2022. ICTs and the urban-rural divide: can online labour platforms bridge the gap?. *Information, Communication & Society* **25**:1, 34-54. [[Crossref](#)]

118. Alessandra Canepa, Emilio Zanetti Chini, Huthaifa Alqaralleh. 2022. Global Cities and Local Challenges: Booms and Busts in the London Real Estate Market. *The Journal of Real Estate Finance and Economics* **64**:1, 1-29. [[Crossref](#)]
119. Habib Sadri, Peyman Pourbagheri, Ibrahim Yitmen. 2022. Towards the implications of Boverket's climate declaration act for sustainability indices in the Swedish construction industry. *Building and Environment* **207**, 108446. [[Crossref](#)]
120. Andrés Rodríguez-Pose, Michael Storper. 2022. Dodging the burden of proof: A reply to Manville, Lens and Mönkkönen. *Urban Studies* **59**:1, 59-74. [[Crossref](#)]
121. David Foster, Joseph Warren. 2022. The NIMBY problem. *Journal of Theoretical Politics* **34**:1, 145-172. [[Crossref](#)]
122. Nicolás González-Pampillón. 2022. Spillover effects from new housing supply. *Regional Science and Urban Economics* **92**, 103759. [[Crossref](#)]
123. Ning Jia, Raven Molloy, Christopher L. Smith, Abigail Wozniak. 2022. The Economics of Internal Migration: Advances and Policy Questions. *SSRN Electronic Journal* **108**. . [[Crossref](#)]
124. Nathan Hutson, Anthony W. Orlando. 2022. The Effects of COVID-19 on Downtown Land Use: Evidence from Austin and Los Angeles. *SSRN Electronic Journal* **29**. . [[Crossref](#)]
125. Kevin Corinth, Hugo Dante. 2022. The Understated Housing Shortage in the United States. *SSRN Electronic Journal* **107**. . [[Crossref](#)]
126. Josephine S. Akosa, Michael J. Osei. 2022. A Threshold Analysis of the Effect of House Prices on Local Labor Markets in the Us. *SSRN Electronic Journal* **0**. . [[Crossref](#)]
127. Eric Fesselmeyer, Haoming Liu, Louisa Poco. 2022. Within-Development Density and Housing Prices in Singapore. *SSRN Electronic Journal* **113**. . [[Crossref](#)]
128. Simon Büchler, Maximilian von Ehrlich. 2022. Qualifying Land-Use Regulation and its Determinants. *SSRN Electronic Journal* **100**. . [[Crossref](#)]
129. Loretta Isabella Dobrescu, Akshay Shanker, Hazel Bateman, Ben Rhodri Newell, Susan Thorp. 2022. Retirement Eggs and Retirement Baskets. *SSRN Electronic Journal* **19**. . [[Crossref](#)]
130. Yuming Fu, Song Shi. 2022. Barriers to urban spatial development: Evidence from the 2010–2011 Christchurch earthquakes. *Journal of Regional Science* **62**:1, 218-245. [[Crossref](#)]
131. Kenzo Asahi, Hugo Silva, Andrea Herrera. 2022. The Effects of Land-Use Regulation and Transport Infrastructure on the Distribution of Economic Activity. *SSRN Electronic Journal* **45**. . [[Crossref](#)]
132. Clayton Nall, Christopher S. Elmendorf, Stan Oklobdzija. 2022. Folk Economics and the Persistence of Political Opposition to New Housing. *SSRN Electronic Journal* **19**. . [[Crossref](#)]
133. Yao-Yu Chih, Firat Demir, Chenghao Hu, Junyi Liu, Hwei Shen. 2022. Residential Housing Investment and Local Corruption: Evidence from the Chinese Housing Market. *SSRN Electronic Journal* **25**. . [[Crossref](#)]
134. Georgios Nikolakoudis. 2022. Heterogeneous Deleveraging. *SSRN Electronic Journal* **109**. . [[Crossref](#)]
135. NINGHUI LI, HAOPENG SHEN, Tian Xia. 2022. Urban Growth, Land Scarcity, and Heterogeneous Monetary Policy Effects. *SSRN Electronic Journal* **36**. . [[Crossref](#)]
136. Vaidehi Tandel, Sahil Gandhi, Anupam Nanda, Nandini Agnihotri. 2022. Do Mandatory Disclosures Squeeze the Lemons? The Case of Housing Markets. *SSRN Electronic Journal* **84**. . [[Crossref](#)]
137. Jiaqi Ge, Bernardo Alves Furtado. Simulating Urban Transition in Major Socio-Economic Shocks 1-10. [[Crossref](#)]
138. . The American Political Economy **115**, . [[Crossref](#)]

139. Nicholas Kacher, Luke Petach. 2021. Boon or Burden? Evaluating the Competing Effects of House-Price Shocks on Regional Entrepreneurship. *Economic Development Quarterly* 35:4, 287-304. [[Crossref](#)]
140. Joe Gyourko, Jacob Krimmel. 2021. The impact of local residential land use restrictions on land values across and within single family housing markets. *Journal of Urban Economics* 126, 103374. [[Crossref](#)]
141. Simon Büchler, Maximilian v. Ehrlich, Olivier Schöni. 2021. The amplifying effect of capitalization rates on housing supply. *Journal of Urban Economics* 126, 103370. [[Crossref](#)]
142. Evelyn Blumenberg, Hannah King. 2021. Jobs–Housing Balance Re-Re-Visited. *Journal of the American Planning Association* 87:4, 484-496. [[Crossref](#)]
143. William Marble, Clayton Nall. 2021. Where Self-Interest Trumps Ideology: Liberal Homeowners and Local Opposition to Housing Development. *The Journal of Politics* 83:4, 1747-1763. [[Crossref](#)]
144. John V. Duca, John Muellbauer, Anthony Murphy. 2021. What Drives House Price Cycles? International Experience and Policy Issues. *Journal of Economic Literature* 59:3, 773-864. [[Abstract](#)] [[View PDF article](#)] [[PDF with links](#)]
145. Francisco Gomes, Michael Haliassos, Tarun Ramadorai. 2021. Household Finance. *Journal of Economic Literature* 59:3, 919-1000. [[Abstract](#)] [[View PDF article](#)] [[PDF with links](#)]
146. Matthew J. Botsch, Stephen D. Morris. 2021. Job loss risk, expected mobility, and home ownership. *Journal of Housing Economics* 53, 101733. [[Crossref](#)]
147. Tim Winke. 2021. Housing affordability sets us apart: The effect of rising housing prices on relocation behaviour. *Urban Studies* 58:12, 2389-2404. [[Crossref](#)]
148. Virginia De Jorge-Huertas, Justo De Jorge-Moreno. 2021. Analysis of the effects of (de)regulation on housing prices in Spain 1977–2019. *Journal of Economic Studies* 48:6, 1194-1206. [[Crossref](#)]
149. A Accetturo, A. R Lamorgese, S Mocetti, D Pellegrino. 2021. Housing supply elasticity and growth: evidence from Italian cities. *Journal of Economic Geography* 21:3, 367-396. [[Crossref](#)]
150. V. N. Bobkov, N. K. Dolgushkin, E. V. Odintsova. 2021. Features of Housing Provision for Rural and Urban Populations. *Herald of the Russian Academy of Sciences* 91:4, 473-481. [[Crossref](#)]
151. Joseph Gyourko, Jonathan S. Hartley, Jacob Krimmel. 2021. The local residential land use regulatory environment across U.S. housing markets: Evidence from a new Wharton index. *Journal of Urban Economics* 124, 103337. [[Crossref](#)]
152. Greg Howard, Jack Liebersohn. 2021. Why is the rent so darn high? The role of growing demand to live in housing-supply-inelastic cities. *Journal of Urban Economics* 124, 103369. [[Crossref](#)]
153. William N. Evans, David C. Phillips, Krista Ruffini. 2021. POLICIES TO REDUCE AND PREVENT HOMELESSNESS: WHAT WE KNOW AND GAPS IN THE RESEARCH. *Journal of Policy Analysis and Management* 40:3, 914-963. [[Crossref](#)]
154. Brian Joseph Gillespie, Clara H. Mulder, Michael J. Thomas. 2021. Migration for family and labour market outcomes in Sweden. *Population Studies* 75:2, 209-219. [[Crossref](#)]
155. Peter Phibbs, Nicole Gurran. 2021. The role and significance of planning in the determination of house prices in Australia: Recent policy debates. *Environment and Planning A: Economy and Space* 53:3, 457-479. [[Crossref](#)]
156. C.J. Gabbe, Michael Kevane, William A. Sundstrom. 2021. The effects of an “urban village” planning and zoning strategy in San Jose, California. *Regional Science and Urban Economics* 88, 103648. [[Crossref](#)]
157. Sahil Gandhi, Vaidehi Tandel, Alexander Tabarrok, Shamika Ravi. 2021. Too slow for the urban march: Litigations and the real estate market in Mumbai, India. *Journal of Urban Economics* 123, 103330. [[Crossref](#)]

158. Elliott Sclar. 2021. The Infinite Elasticity of Air: New York City's Financialization of Transferable Development Rights. *The American Journal of Economics and Sociology* **80**:2, 353-380. [[Crossref](#)]
159. Tim-Benjamin Lembcke, Mathias Willnat, Henrik Lechte, Maike Greve, Julia Heinsohn, Alfred Benedikt Brendel. 2021. Mobility Need-Adaptive Housing Platforms: The Benefit of a Commute Time Search Feature. *Sustainability* **13**:6, 3169. [[Crossref](#)]
160. Arthur Grimes, Kade Sorensen, Chris Young. 2021. Repeat sales house price indices: comparative properties under alternative data generation processes. *New Zealand Economic Papers* **55**:1, 7-18. [[Crossref](#)]
161. Peter Nunns. 2021. The causes and economic consequences of rising regional housing prices in New Zealand. *New Zealand Economic Papers* **55**:1, 66-104. [[Crossref](#)]
162. Cameron K. Murray. 2021. The Australian housing supply myth. *Australian Planner* **57**:1, 1-12. [[Crossref](#)]
163. Remi Jedwab, Prakash Loungani, Anthony Yezer. 2021. Comparing cities in developed and developing countries: Population, land area, building height and crowding. *Regional Science and Urban Economics* **86**, 103609. [[Crossref](#)]
164. George Galster, Kwan Ok Lee. 2021. Housing affordability: a framing, synthesis of research and policy, and future directions. *International Journal of Urban Sciences* **25**:sup1, 7-58. [[Crossref](#)]
165. Matthias Helble, Kwan Ok Lee, Ma. Adelle Gia Arbo. 2021. How (Un)affordable is housing in developing Asia?. *International Journal of Urban Sciences* **25**:sup1, 80-110. [[Crossref](#)]
166. Christine M. E. Whitehead, John Goering. 2021. Local affordable housing dynamics in two global cities: patterns and possible lessons?. *International Journal of Urban Sciences* **25**:sup1, 241-265. [[Crossref](#)]
167. Andra C. Ghent, David Leather. 2021. Is America's Housing Affordability Problem a Housing Problem?. *SSRN Electronic Journal* **118**. . [[Crossref](#)]
168. C. Luke Watson, Oren Ziv. 2021. Is the Rent Too High? Land Ownership and Monopoly Power. *SSRN Electronic Journal* **123**. . [[Crossref](#)]
169. Andrii Parkhomenko. 2021. Homeownership, Inequality, and Polarization. *SSRN Electronic Journal* **95**. . [[Crossref](#)]
170. Gabriel Chodorow-Reich, Adam M. Guren, Timothy McQuade. 2021. The 2000s Housing Cycle With 2020 Hindsight: A Neo-Kindlebergerian View. *SSRN Electronic Journal* **10**. . [[Crossref](#)]
171. Kevin Corinth, Amelia Irvine. 2021. The Effect of Relaxing Local Housing Market Regulations on the Number of Recipients of Federal Rental Housing Assistance Programs. *SSRN Electronic Journal* **107**. . [[Crossref](#)]
172. Cristina Bratu, Oskari Harjunen, Tuukka Saarimaa. 2021. City-wide effects of new housing supply: Evidence from moving chains. *SSRN Electronic Journal* **29**. . [[Crossref](#)]
173. Graeme Guthrie. 2021. Land Hoarding and Urban Development. *SSRN Electronic Journal* **39**. . [[Crossref](#)]
174. Santosh Anagol, Fernando V. Ferreira, Jonah Rexer. 2021. Estimating the Economic Value of Zoning Reform. *SSRN Electronic Journal* **83**. . [[Crossref](#)]
175. Jenny Schuetz. 2021. How can state governments support healthier housing markets?. *SSRN Electronic Journal* **8**. . [[Crossref](#)]
176. Qiao Wang, Xiuyan Liu, Sam Hak Kan Tang, Cong Du. 2021. Land Use Policy and Employment Growth- Evidence from China. *SSRN Electronic Journal* **1984**. . [[Crossref](#)]
177. Jengei Hong, Doojin Ryu. 2021. Expectations and the Housing Market: A Model of House Price Dynamics. *SSRN Electronic Journal* **26**. . [[Crossref](#)]

178. Jaehee Song. 2021. The Effects of Residential Zoning in U.S. Housing Markets. *SSRN Electronic Journal* **3465010**. . [\[Crossref\]](#)
179. David Imbroscio. 2021. Rethinking Exclusionary Zoning or: How I Stopped Worrying and Learned to Love It. *Urban Affairs Review* **57**:1, 214-251. [\[Crossref\]](#)
180. Thomas H. Byrne, Benjamin F. Henwood, Anthony W. Orlando. 2021. A Rising Tide Drowns Unstable Boats: How Inequality Creates Homelessness. *The ANNALS of the American Academy of Political and Social Science* **693**:1, 28-45. [\[Crossref\]](#)
181. Junqiang Li, Hao Ren, Chenqian Xu, Changcheng Zhang. 2020. Multiplayer Speculation, Interest Coalition, and Housing Prices Fluctuations. *Journal of Urban Planning and Development* **146**:4. . [\[Crossref\]](#)
182. Alessandra Canepa, Emilio Zanetti Chini, Huthaifa Alqaralleh. 2020. Global Cities and Local Housing Market Cycles. *The Journal of Real Estate Finance and Economics* **61**:4, 671-697. [\[Crossref\]](#)
183. Huthaifa Alqaralleh, Alessandra Canepa. 2020. Housing market cycles in large urban areas. *Economic Modelling* **92**, 257-267. [\[Crossref\]](#)
184. JESSE YODER. 2020. Does Property Ownership Lead to Participation in Local Politics? Evidence from Property Records and Meeting Minutes. *American Political Science Review* **114**:4, 1213-1229. [\[Crossref\]](#)
185. Yuting Cao, Ran Liu, Wei Qi, Jin Wen. 2020. Urban Land Regulation and Heterogeneity of Housing Conditions of Inter-Provincial Migrants in China. *Land* **9**:11, 428. [\[Crossref\]](#)
186. Cameron K. Murray. 2020. Time is money: How landbanking constrains housing supply. *Journal of Housing Economics* **49**, 101708. [\[Crossref\]](#)
187. Lior Glick. 2020. Cities, selective admission, and economic sorting. *Politics, Philosophy & Economics* **19**:3, 274-292. [\[Crossref\]](#)
188. Geok Peng Yeap, Hooi Hooi Lean. 2020. NONLINEAR RELATIONSHIP BETWEEN HOUSING SUPPLY AND HOUSE PRICE IN MALAYSIA. *International Journal of Strategic Property Management* **24**:5, 313-322. [\[Crossref\]](#)
189. Taner Osman. 2020. Restrictive Land Use Regulations and Economic Performance. *International Regional Science Review* **43**:4, 291-315. [\[Crossref\]](#)
190. John F. McDonald. 2020. How asymmetric are urban housing markets? Some worst cases. *The Journal of Economic Asymmetries* **21**, e00149. [\[Crossref\]](#)
191. Peter Gordon, Karima Kourtit. 2020. Agglomeration and clusters near and far for regional development: A critical assessment. *Regional Science Policy & Practice* **12**:3, 387-396. [\[Crossref\]](#)
192. Nicholas J. Marantz, Huixin Zheng. 2020. State Affordable Housing Appeals Systems and Access to Opportunity: Evidence From the Northeastern United States. *Housing Policy Debate* **30**:3, 370-395. [\[Crossref\]](#)
193. Felipe Carozzi. 2020. The role of demand in land re-development. *Journal of Urban Economics* **117**, 103244. [\[Crossref\]](#)
194. Edward L. Glaeser. 2020. Urbanization and Its Discontents. *Eastern Economic Journal* **46**:2, 191-218. [\[Crossref\]](#)
195. Mary Cleveland. 2020. Homelessness and Inequality. *The American Journal of Economics and Sociology* **79**:2, 559-590. [\[Crossref\]](#)
196. Keyang Li, Yu Qin, Jing Wu. 2020. Recent housing affordability in urban China: A comprehensive overview. *China Economic Review* **59**, 101362. [\[Crossref\]](#)
197. Mario A. Fernandez. 2020. A matching simulation to assess additional housing capacity in Auckland. *New Zealand Economic Papers* **54**:1, 67-88. [\[Crossref\]](#)

198. Gavin A. Wood, Rachel Ong, Melek Cigdem. 2020. Ageing and Declining Rates of Home Ownership: Twin Threats to Housing Assistance. *Urban Policy and Research* **38**:1, 3-17. [[Crossref](#)]
199. Raven Molloy. 2020. The effect of housing supply regulation on housing affordability: A review. *Regional Science and Urban Economics* **80**, 103350. [[Crossref](#)]
200. Stuart Gabriel, Gary Painter. 2020. Why affordability matters. *Regional Science and Urban Economics* **80**, 103378. [[Crossref](#)]
201. David Lopez Rodriguez, María de los Llanos Matea. 2020. La intervención pública en el mercado del alquiler de vivienda: una revisión de la experiencia internacional (Public Intervention in the Housing Rental Market: A Review of the International Experience). *SSRN Electronic Journal* . [[Crossref](#)]
202. Carlos Garriga, Pedro Gete, Athena Tsouderou. 2020. Investors and Housing Affordability. *SSRN Electronic Journal* . [[Crossref](#)]
203. Charles Ka Yui Leung, Cho Yiu Joe Ng, Edward Chi Ho Tang. 2020. Why Is the Hong Kong Housing Market Unaffordable? Some Stylized Facts and Estimations. *SSRN Electronic Journal* . [[Crossref](#)]
204. Jose Maria Barrero, Nicholas Bloom, Steven J. Davis. 2020. COVID-19 Is Also a Reallocation Shock. *SSRN Electronic Journal* . [[Crossref](#)]
205. Michael D. Eriksen, Anthony W. Orlando. 2020. Returns to Scale in Residential Construction: The Marginal Impact of Building Height. *SSRN Electronic Journal* . [[Crossref](#)]
206. Alexander Billy, Michael Packard. 2020. Crime and the Mariel Boatlift. *SSRN Electronic Journal* **59**. . [[Crossref](#)]
207. David Foster, Joseph Warren. 2020. The NIMBY problem. *SSRN Electronic Journal* **110**. . [[Crossref](#)]
208. Erwin Dekker, Pavel Kuchař. 2020. The Epistemological Break in Economics: What Does the Public Know About the Economy and What Do Economists Know About the Public?. *SSRN Electronic Journal* **69**. . [[Crossref](#)]
209. Hongwei Dong, J Andy Hansz. 2019. Zoning, density, and rising housing prices: A case study in Portland, Oregon. *Urban Studies* **56**:16, 3486-3503. [[Crossref](#)]
210. Armin Jeddi Yeganeh, Andrew Patton McCoy, Steve Hankey. 2019. Green Affordable Housing: Cost-Benefit Analysis for Zoning Incentives. *Sustainability* **11**:22, 6269. [[Crossref](#)]
211. Christopher Feather. 2019. The Two Million Housing Drive in Korea. *International Journal of Housing Markets and Analysis* **12**:5, 906-933. [[Crossref](#)]
212. Pierre Fleckinger, Matthieu Glachant, Paul-Hervé Tamokoué Kamga. 2019. Energy Performance Certificates and investments in building energy efficiency: A theoretical analysis. *Energy Economics* **84**, 104604. [[Crossref](#)]
213. Kirdan Lees. 2019. Quantifying the costs of land use regulation: evidence from New Zealand. *New Zealand Economic Papers* **53**:3, 245-269. [[Crossref](#)]
214. Daniel Shoag, Stan Veuger. 2019. Do land use restrictions increase restaurant quality and diversity?. *Journal of Regional Science* **59**:3, 435-451. [[Crossref](#)]
215. Yizhe Zhang, Lei Duan, Bin Wang, Yulin Du, Giovanni Cagnetta, Jun Huang, Lee Blaney, Gang Yu. 2019. Wastewater-based epidemiology in Beijing, China: Prevalence of antibiotic use in flu season and association of pharmaceuticals and personal care products with socioeconomic characteristics. *Environment International* **125**, 152-160. [[Crossref](#)]
216. Christos Makridis. 2019. (Why) Are Housing Costs Rising?. *SSRN Electronic Journal* . [[Crossref](#)]
217. Cameron Murray. 2019. Marginal and Average Prices of Land Lots Should Not Be Equal: A Critique of Glaeser and Gyourko's Method for Identifying Residential Price Effects of Town Planning Regulations. *SSRN Electronic Journal* . [[Crossref](#)]

218. Marc Francke, Matthijs Korevaar. 2019. When Birth or Death Hits Home: Demography and the Housing Market in Paris and Amsterdam, 1400-present. *SSRN Electronic Journal* . [[Crossref](#)]
219. Albert Saiz. Some Brief Thoughts on Housing Supply and Policy 109-119. [[Crossref](#)]
220. Wei Chen, Zaiyan Wei, Karen Xie. 2019. The Battle for Homes: How Does Home Sharing Disrupt Local Residential Markets?. *SSRN Electronic Journal* **72**. . [[Crossref](#)]
221. Stephen Kirchner. 2018. Money too tight to mention: The Reserve Bank of Australia's financial stability mandate and low inflation. *Economic Analysis and Policy* **60**, 141-149. [[Crossref](#)]
222. Ross Kendall, Peter Tulip. 2018. The Effect of Zoning on Housing Prices. *SSRN Electronic Journal* . [[Crossref](#)]
223. Christos Makridis. 2018. Housing Market Regulation and Labor Market Dynamism. *SSRN Electronic Journal* . [[Crossref](#)]
224. Greg Howard, Carl Liebersohn. 2018. The Geography Channel of House Price Appreciation. *SSRN Electronic Journal* . [[Crossref](#)]
225. Fabian Braesemann, Vili Lehdonvirta, Otto Kässi. 2018. Impacts of Online Labour Markets on Rural Employment. *SSRN Electronic Journal* . [[Crossref](#)]
226. Venoo Kakar, Aditi Grossman. 2018. Jobs and Housing (Im)balance in the San Francisco Bay Area. *SSRN Electronic Journal* . [[Crossref](#)]
227. Atsushi Yamagishi. 2018. Minimum Wage and Housing Rents: Theory and Evidence. *SSRN Electronic Journal* . [[Crossref](#)]
228. Christos Makridis, Yongwook Paik. 2018. Valuing the Welfare Gains of Uber. *SSRN Electronic Journal* . [[Crossref](#)]
229. Michele Loberto, Andrea Luciani, Marco Pangallo. 2018. The Potential of Big Housing Data: An Application to the Italian Real-Estate Market. *SSRN Electronic Journal* **104**. . [[Crossref](#)]
230. Jacob Cosman, Luis Quintero. 2018. Market Concentration in Homebuilding. *SSRN Electronic Journal* **169**. . [[Crossref](#)]
231. Neil Bhutta, Steven Laufer, Daniel R. Ringo. 2017. Are Rising Home Values Restraining Homebuying for Lower-Income Families?. *FEDS Notes* **2017:2078**. . [[Crossref](#)]
232. Jeffrey P. Cohen, Yannis M. Ioannides. 2017. International and Intercity Trade, and Housing Prices in US Cities. *SSRN Electronic Journal* . [[Crossref](#)]